

SHARP

MX-4501N/MX-3501N
MX-4500N/MX-3500N
Digital Full Colour Multifunction Printer



ADVANCE YOUR BUSINESS WITH
SECURE, MULTIFUNCTION **COLOUR**



SHARP **DOCUMENT SOLUTIONS**

PRINT

COPY

LET THE SYNERGY OF COLOUR AND MULTIFUNCTION TAKE YOUR BUSINESS TO NEW HEIGHTS

Colour is a powerful communication tool that can give your business an extra edge in getting your message through. With the MX-4501N/MX-3501N/MX-4500N/MX-3500N, you can bring the advantages of colour to your office without compromising productivity or quality.

Fast output speeds for colour and black & white documents, high-quality imaging technology and a host of productivity-boosting features make copy/print jobs effortless. And with the optional Fiery Print Controller, your entire office can benefit from powerful network printing solutions.

In addition to advanced printing and copying, the MX-45/35 series features an integrated document management system that seamlessly streamlines office workflow, while its multi-layered security functions ensure that your business is protected.



USER-FRIENDLY AND ENVIRONMENTALLY CONSCIOUS

The MX-45/35 series is easy to use for everyone in your office, regardless of ability or experience. Users can navigate quickly and easily through more advanced functions with the help of a large, easy-to-read touch-screen LCD with customisable keys. And for increased flexibility, Sharp OSA (Open Systems Architecture) allows third-party developers to customise the MX-45/35 series for specific user applications.

The MX-45/35 series is also conscious of the environment by using newly developed supplies, such as a low-consumption toner in a compact cartridge. They also feature a design that complies with both the RoHS* Directive, which restricts the use of hazardous substances, and the Energy Star programme, which is the international standard for energy-efficient products.



* RoHS: Restriction of the use of certain Hazardous Substances



The MX-45/35 series utilises upgraded versions of Sharp's award-winning software solutions for data security and file management.

SCAN

FAX

FILE

KEY FEATURES

Exceptional Productivity

- Speedy output of max. 35 ppm in colour (all models) and max. 45 ppm in black & white (MX-45 series)
- Quick first copy out time in both colour and black & white
- Professional job finishing options include booklet making and hole punching
- Network tandem function doubles output speed by linking two machines
- Standard hard disk and electronic sorting for both colour and black & white
- Large paper capacity of max. 5,600 sheets
- Standard stackless duplex module and 150-sheet Duplex Single Pass Feeder (MX-4501N/MX-3501N) or 100-sheet Reversing Single Pass Feeder (MX-4500N/MX-3500N)

Superb Image Quality

- High-quality imaging with new toner
- Oil-less toner for brilliant colour output
- Enhanced Sharp Auto Colour Mode and Auto Colour Selection for easy colour copying

Multi-Faceted Colour Performance

- Standard PCL5c/PCL6 and optional PS3 emulation
- Optional Fiery Print Controller for powerful network printing solutions
- Full-colour network scanning with scan to e-mail/FTP server/desktop/network folder (SMB)/USB memory
- Sharpdesk™ for easy, integrated document management on a PC
- Document filing function to instantly reuse saved jobs
- Optional Super G3 fax and Internet fax (in black & white)
- LDAP support for easy browsing of e-mail addresses and fax numbers



Photo: MX-4501N

Versatile Operation

- Variety of advanced copy/print functions
- Large touch-screen LCD control panel and customisable user settings
- USB memory direct printing*1, external USB keyboard for easy typing
- Colour stamp function, mixed size original feeding, easy text entry
- Sharp OSA (Open Systems Architecture)*2 allows third-party software developers to customise the machine to meet exact user needs

*1: Due to a wide variety of USB memory devices, compatibility cannot be guaranteed for all

*2: Requires optional MX-AMX2 and/or MX-AMX3

Multi-Layered Security

- Optional Data Security Kit encrypts and erases confidential data
- Secure Socket Layer (SSL) and encrypted PDF for secure network communications
- Document Control function* prevents unauthorised copying, scanning, faxing and filing
- Secure embedded network interface with IP/MAC address filtering

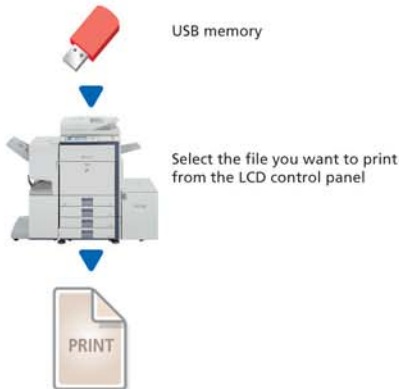
* Requires optional Data Security Kit. May not work for certain types of documents and paper

Environment and User-Friendly

- Newly developed, environmentally conscious supplies
- Industry-leading energy-saving design (less than 1W in night-time standby for fax reception)
- Lead and chromium-free design (RoHS compliant)
- Compact toner cartridge and less packaging materials
- Job Status screen lets you view the list of jobs in progress

IMPRESSIVE OFFICE COLOUR PRINTING

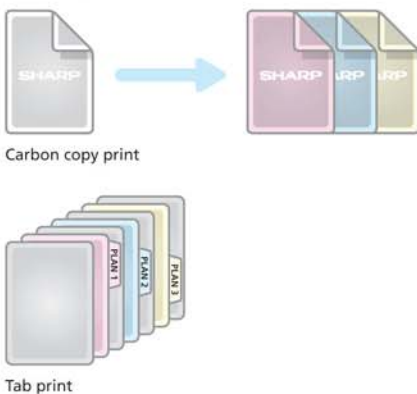
USB Memory Direct Printing



A Variety of Job Finishing Options



Various Applications



The MX-45/35 series delivers high-quality, professional-looking documents at fast output speeds of 35 ppm for full colour; black & white output speeds of 45 ppm for the MX-4501N/MX-4500N and 35 ppm for the MX-3501N/MX-3500N. The RIP Once/Print Many function allows the quick printing of multi-page documents directly from the MX-45/35 series' hard disk. And for optimal workflow, add the optional Fiery Print Controller for powerful office-wide network printing.

at a glance...

- Productive **colour printing** at 35 ppm (all models) and **black & white printing** at 45 ppm (MX-4501N/MX-4500N) and 35 ppm (MX-3501N/MX-3500N)
- **Stackless duplex module** saves you filing space and paper costs
- **Network printing** supports the most commonly used network operating systems and protocols
- Optional **Fiery Print Controller** provides advanced network printing solutions
- **USB memory direct printing***1 — conveniently print data directly from USB memory devices, without accessing a PC
- **PDF/TIFF/JPEG direct print***2 — save valuable time by printing PDF, TIFF or JPEG files without using the printer driver, either by calling and printing the file directly from an FTP server, direct printing from a Web page, or direct printing of e-mail attachments
- **Network tandem function** — double the output speed by using two MX-45/35 series machines on the same network
- **Proof printing** — check a trial set before printing out a multi-page document in large numbers
- **Supports PCL5c and PCL6** printer language emulations; **PostScript3** is available*3 for compatibility with more fonts and better graphics handling

*1: Due to a wide variety of USB memory devices, compatibility cannot be guaranteed for all

*2: Requires optional MX-PKX1; may not support all PDF, TIFF or JPEG file formats.

*3: Requires optional MX-PKX1

Automated Finishing Options

Optional finishing peripherals capable of multi-position stapling, saddle stitch booklet finishing and hole-punching can be added to create sophisticated and professional-looking documents. A space-efficient finisher is also available for simple jobs that require only sorting and stapling.

Special Applications

- **Carbon copy print** — print multiple copies of the same data on plain and/or coloured paper fed from different paper trays
- **Form overlay** — store document formatting such as letterheads in colour, eliminating the need for pre-printed paper
- **Tab print** — print directly onto tabs on document separators and insert them into assigned positions
- **Barcode font print compatibility** (requires optional AR-PF1 Barcode Font Kit)

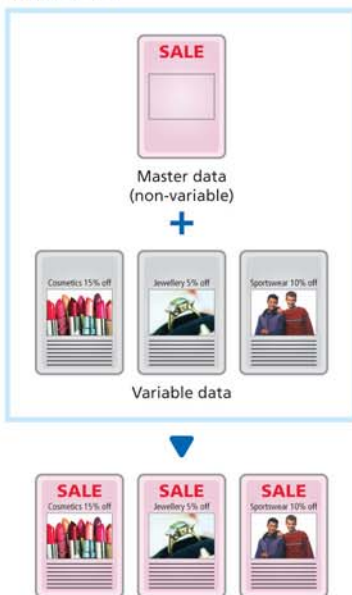
PRINT

ADVANCED NETWORK PRINTING SOLUTIONS

Fiery Print Controller

The optional MX-PEX1 Fiery Print Controller upgrades the MX-45/35 series' network printing capabilities, combining streamlined productivity with powerful tools for managing and manipulating workflow. Features include:

Fiery FreeForm



at a glance...

- **Command Workstation™** enables the centralised management of multiple Fiery print controllers, allowing maximum control of print jobs
- **WebTools™** — monitor and manage print jobs through a Web browser on your PC
- **Fiery FreeForm™** enables fast variable data printing. Once a master document is stored on the MX-PEX1, FreeForm saves time by pairing variable or personal data with the master rather than making each document one by one
- **ColorWise®** — a complete colour management system designed to ensure consistent and accurate colour output across multiple platforms and applications
- **ColorWise® ProTools** provides advanced calibration and profile management utilities that allow precise control of colour quality
- **RIP-While-Print™** begins processing pages while current pages are printing, increasing throughput on multi-page documents
- **Continuous Print™** stores processed pages in memory before printing them out
- **Genuine Adobe® PostScript®3™** support for superior print performance

Optional Fiery software is available for specialised applications:

- **EFI Impose** assembles and edits documents before processing or RIP-ing, regardless of the originating application or platform
- **Secure Erase** deletes and overwrites all traces of job data from the hard disk
- **Velocity Balance™** provides centralised management of multiple printers and intelligent distribution of jobs according to the print speed and colour capability of individual printers
- **EFI Color Profiler™ Kit** ensures accurate and consistent colour across multiple printers and monitors
- **Graphic Arts Option** — a set of tools for graphic arts professionals that provides easy-to-use utilities like Hot Folders for automated, streamlined workflow, Spot-On to edit CMYK values associated with existing named colours, and Auto Trapping to avoid gaps between two neighbouring colours printed

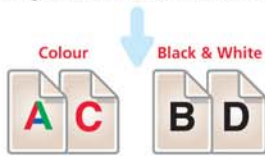
HIGH PERFORMANCE COLOUR COPYING

The MX-45/35 series' quick first copy out time and continuous copy rates will help your office maximise productivity. Conveniently scan double-sided documents using the MX-4501N/MX-3501N's DSPF (Duplex Single Pass Feeder) or the MX-4500N/MX-3500N's RSPF (Reversing Single Pass Feeder). The MX-45/35 series also offers several advanced copy modes that save you time and ensure excellent copy quality.

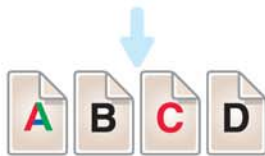
Auto Colour Selection in Copying



Original with colour and black & white pages



Distinguishes colour and black & white pages



Outputs colour pages in Colour Mode and black & white pages in Black & White Mode

at a glance...

- **Fast colour copying** at 35 cpm (all models) and **black & white copying** at 45 cpm (MX-4501N/MX-4500N) and 35 cpm (MX-3501N/MX-3500N)
- **Quick first copy out time** — 6.9 sec. in colour (all models), 4.1 sec. (MX-4501N/MX-4500N) and 4.7 sec. (MX-3501N/MX-3500N) in black & white
- **Convenient 150-sheet DSPF** (Duplex Single Pass Feeder) makes any scan job easy; double-sided documents are scanned in one pass (MX-4501N/MX-3501N)
- **100-sheet RSPF** (Reversing Single Pass Feeder) automatically scans double-sided documents (MX-4500N/MX-3500N)
- **Mixed size original copy mode** automatically distinguishes documents of mixed sizes*1 fed through the DSPF/RSPF and chooses the appropriate paper
- **Enhanced Sharp Auto Colour Mode** clearly reproduces text even with colour or halftone dots in the background
- **Auto Colour Selection** — the MX-45/35 series automatically detects colour and black & white pages from multi-page originals, selects the appropriate mode for each page and then outputs the copy to match the original
- **Scan Once/Print Many, electronic sorting and offset stacking** for highly productive copying
- **Large paper supply** of up to 5,600 sheets
- **Job Build function** — large-volume jobs can be scanned in batches and stored for output as a single job*2
- **Image editing functions** — multi-shot (4-in-1, 2-in-1), multi-page enlargement, image repeat, mirror image and more

*1: Some restrictions apply when combining paper sizes of different format series.

*2: The number of pages that can be stored for the Job Build function depends on the machine's HDD capacity and other conditions

High-Quality Imaging with New Toner

The MX-45/35 series adopts a newly developed toner that not only clearly reproduces thin lines, small characters and even halftone colours; the oil-less toner also produces vivid, natural-looking colour printouts that you can easily write messages or post sticky notes on.



Colour Stamp

Special Applications

- **Proof copy function** — check a trial set and make any necessary copy adjustments before outputting the entire volume
- **Colour stamp function** — stamp page numbers, the date or text such as "CONFIDENTIAL" in up to four different colours
- **Tab copy** — copy directly onto tabs on document separators and insert them into assigned positions

SCAN

FAX

VERSATILE IMAGE SEND FUNCTIONS



Various scanned file formats



LDAP for easy browsing

The MX-45/35 series' full-colour network scanning and fax options make document distribution easy. Improve workflow by converting paper-based documents into digital editable files. Quickly distribute documents by scanning directly to a server location or your PC desktop. And save time and effort by adding the optional fax expansion kits to benefit from fast 33.6 kbps transmission speeds or by faxing electronically.

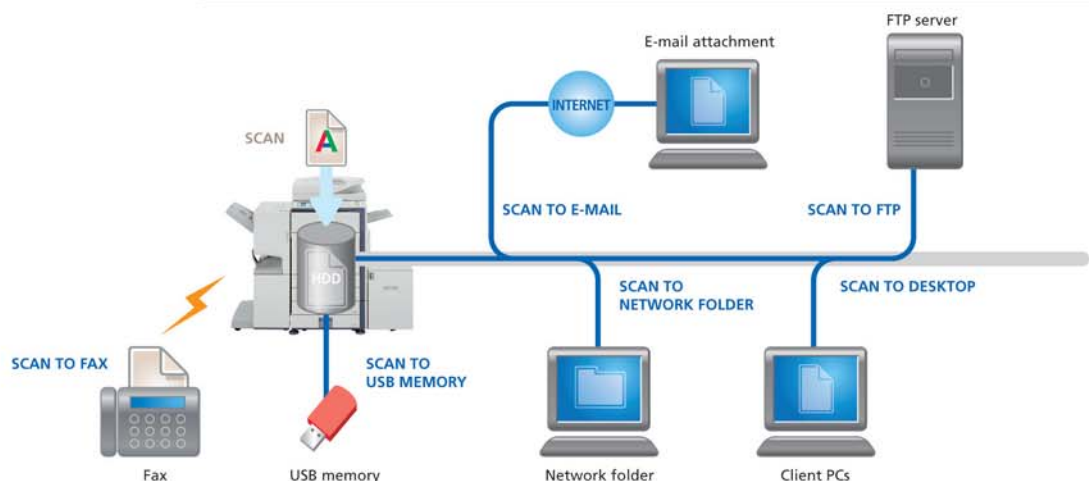
Note: Faxing is available only in black and white.

at a glance...

- **Full-colour scanning** to your PC desktop, e-mail, FTP server, network folder (SMB) or USB memory
- **Various scanned file formats** — TIFF, PDF, encrypted PDF, JPEG (colour only)
- **Auto Colour Selection** — if a multi-page original contains both colour and black & white pages, the MX-45/35 series selects colour or black & white modes accordingly
- **Easy text entry** — preset frequently used e-mail subject titles or messages for easy one-touch entry or directly enter text from the MX-45/35 series' LCD control panel
- **Lightweight Directory Access Protocol (LDAP)** allows easy browsing and storing of e-mail addresses for rapid distribution of scanned documents, as well as automatic synchronisation with your primary e-mail server
- **Paperless faxing with inbound routing** lets you check incoming faxes via e-mail and print only what you need
- **Duplex faxing** — scan and send both pages of two-sided documents and print incoming faxes onto both sides of paper
- **Automated fax finishing** — set the MX-45/35 series to automatically copy and staple incoming faxes*
- **Internet fax** — send and receive faxes over the Internet with other ITU-T T-37 compliant machines without worrying about costs
- **PC-Fax/PC-Internet Fax** — send data directly from a PC to a fax machine without printing to paper

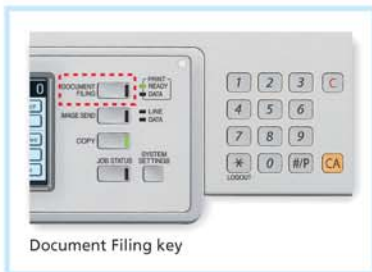
Note: Faxing requires optional MX-FXX1 and Internet faxing requires optional MX-FWX1

** Requires optional finisher or saddle stitch finisher*



FILING FOR STREAMLINED WORKFLOW

Simplify document management and protect your data with the Document Filing function. Store documents directly on the MX-45/35 series' built-in hard disk and eliminate the hassle of paper filing, making it even easier to retrieve documents the next time you need them.



Quick Filing with Temporary Storage

Save up to 1,400 pages or 1,000 files*¹ of processed copy, print, scan and fax*² job data in Quick File Folders on the hard disk for later use, eliminating the need to recreate jobs.

Advanced Filing for Long-Term Storage

Save job data on the hard disk in up to 500 folders with customised names and locations and with enhanced security features to protect your sensitive data. The MX-4501N/MX-3501N store up to 4,200 pages or 3,000 files*¹, while the MX-4500N/MX-3500N store up to 1,400 pages or 1,000 files*¹. Storage options include:

- Main Folder — stores files in a central location for convenient workgroup sharing
- Custom Folder — stores confidential files in private folders with password security

*¹: Measured using Sharp's standard chart (A4 with 6% coverage, black & white). The Quick File Folder shares the HDD with the Job Build function; up to 10GB of data storage is available when using both functions. The storage capacity will be less for colour pages.

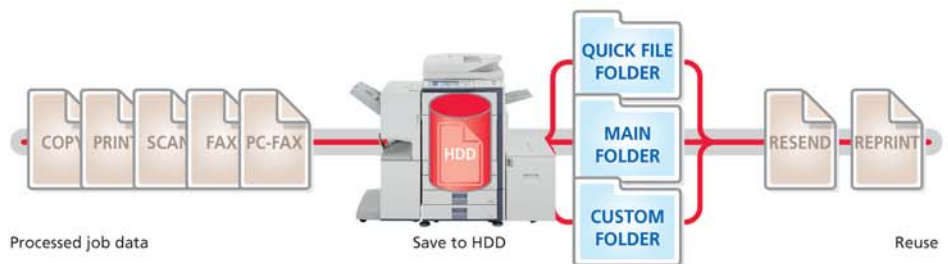
*²: For fax and Internet fax jobs, only transmitted data (not received faxes) can be saved in the Document Filing function.

Easy Access

Conveniently access documents stored on the hard disk from the control panel display or through a Web browser.

Secure Storage

With the optional Data Security Kit installed, all data that goes through the MX-45/35 series' hard disk is encrypted, enabling you to protect confidential data and documents from unauthorised access.





HIGHLY EFFECTIVE **UTILITY** SOFTWARE



Search screen
* Image Compression Tool for converting images into high-compression PDF files.

Easy Document Management with Sharpdesk™

Sharp's original document management software, Sharpdesk™, lets you manage documents in over 200 file formats in a single application right on your PC desktop, making it possible to integrate scanned paper-based documents and files created in popular applications such as Word. It allows you to organise, edit, search and distribute your documents, all with simple drag-and-drop operation. Features include.

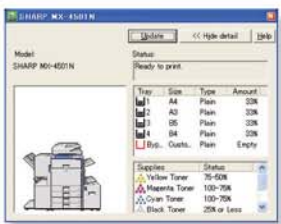
- Intuitive desktop display features **thumbnail** viewing
- Sharpdesk Imaging provides **annotation** tools for paper-free proofreading
- Sharpdesk **Composer** combines different types of files into a single document
- **Optical character recognition** converts documents into editable text files
- **Output zone** distributes files to e-mail, printers and other applications
- **File search** allows searching by file name, keyword or thumbnail



Web-based PAU 4.0

Integrated Web-Based Device Management

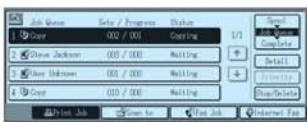
Administrators can set up many features from either over the network or from the control panel of the MX-45/35 series, including address book control, document filing management, user control (accounting) and e-mail alert and status settings.



Printer Status Monitor

Network Utility Software

- **Printer Administration Utility** makes printer networks easier to manage by allowing network administrators to customise monitored items and view settings such as the IP address directly from their PC through a standard Web browser.
- If the MX-45/35 series is low on paper or toner, the **Printer Status Monitor** will alert you in the form of easy-to-understand graphics, allowing you to avoid problems before they arise.

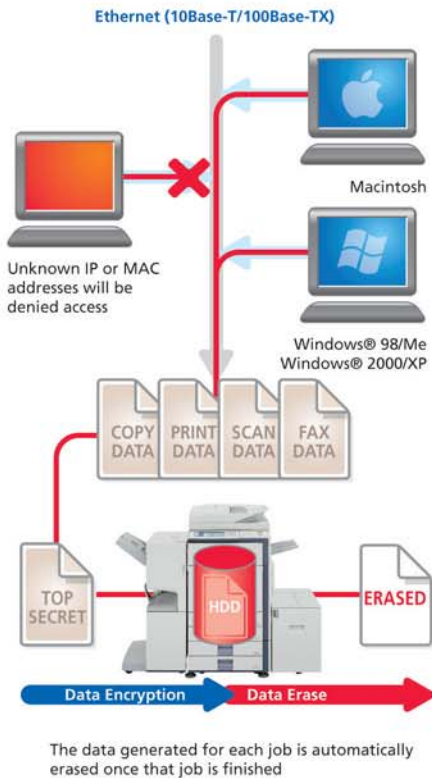


Job Status screen

Job Status Screen

Whether printing or copying, the control panel displays a list of all jobs, showing you at a glance the jobs in progress and the position of your job in the queue.

RELIABLE, LEADING-EDGE SECURITY



Sharp's industry-leading security solutions ensure that your business is protected by offering multiple levels of data and network security that cover a wide range of security needs. The powerful security functions of the MX-45/35 series offer reassurance with advanced levels of protection for your sensitive data and bring peace of mind by preventing unauthorised access.

at a glance...

- **Data Security Kit*¹** encrypts or erases any data on the hard disk or internal memory safely and completely after use
- **Document Control function*²** prevents unauthorised copying, scanning, faxing and filing
- **Encrypted PDF with password protection** prevents unauthorised viewing of confidential image data
- **IP/MAC address filtering** prevents direct connection and access by unauthorised users
- **Confidential data storage and printing** protects sensitive information by requiring the user to enter a PIN code before the documents are produced
- **Secure Socket Layer (SSL)** encrypts data communications to prevent data leakage through the network
- **User authentication** requires logging into the machine with passwords for machine access
- **Secure data storage for Document Filing*³** — all data that goes through the hard disk is encrypted, while passwords used in the Advanced Filing function ensure solid security

*1: Optional

*2: Requires optional Data Security Kit. May not work for certain types of documents and paper

*3: Requires optional Data Security Kit

Document Control Function



Document Control Function

Document Control* prevents unauthorised copying, scanning, faxing and filing of confidential documents. The MX-45/35 series embeds copy prevention data onto a document when it is first copied or printed. It will then detect this data if someone tries to make a copy of the document. Any unauthorised attempts to copy a Document Controlled-document will simply be cancelled or result in the output of a blank page.

* Requires optional Data Security Kit. May not work for certain types of documents and paper.

Data Security Kit

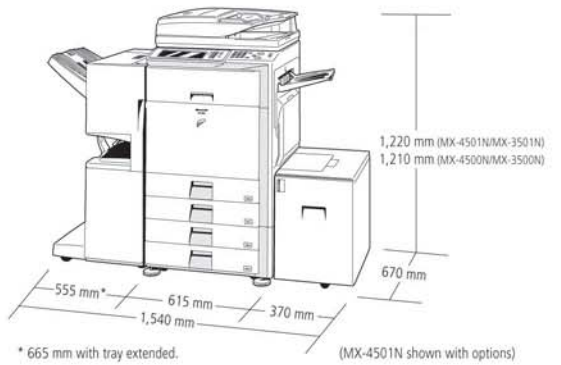
Digital copier/printers or multifunction products can retain hundreds of pages of confidential information from previous jobs on their hard disks or internal memory. To safeguard this information from unauthorised access, the optional Data Security Kit automatically encrypts or erases the data after each job is complete as well as data stored both on the hard disk and in the address book.

SCAN

FAX

FILE

OPTIONS



STANDARD



STANDARD DSPF (MX-4501N/MX-3501N)



Finishing

1. MX-FNX1 Finisher
A3 to B5 (offset/staple), A3W to A5R*1 (non offset)
Offset tray (upper): max. 500-sheet paper capacity*2
Stapling capacity: max. 50-sheet multi-position staple*2
Staple position: 3 locations (front, rear or both)

Optional hole punch function for MX-FNX1:

- MX-PNX1A 2-hole punch unit
- MX-PNX1C 4-hole punch unit
- MX-PNX1D 4-hole wide punch unit

2. MX-FNX2 Saddle Stitch Finisher
A3 to B5R (offset/staple), A3W to A5R*1 (non offset)
Offset tray (upper): max. 1,000-sheet paper capacity*2, max. 30-sheet multi-position staple*2
Staple position: 3 locations (front, rear or both)
Saddle stitch tray (lower): 10 sets (6–10 sheets), 20 sets (1–5 sheets)

3. MX-RBX1 Paper Pass Unit
Required when using MX-FNX2

Optional hole punch function for MX-FNX2:

- AR-PN1A 2-hole punch unit
- AR-PN1C 4-hole punch unit
- AR-PN1D 4-hole wide punch unit

4. MX-TRX2 Exit Tray Unit
Exit tray for main machine

*1: Except A5
*2: A4 or smaller, 80 gsm

Base Unit

5. MX-DEX4 Stand with 2 x 500-Sheet Paper Drawers
A3 to B5R, 500 sheets each (80 gsm) for lower and upper trays

6. MX-DEX3 Stand with 500-Sheet Paper Drawer
A3 to B5R, 500 sheets (80 gsm)

7. MX-DKX2/W Cabinet

8. MX-LCX1 3,500-Sheet Large Capacity Tray
A4 or B5, 3,500 sheets (80 gsm)

Connectivity Board

9. MX-FXX1 Fax Expansion Kit
Super G3 fax module

MX-PKX1 PS3 Expansion Kit
Enables PostScript printing

AR-PF1 Barcode Font Kit

MX-FWX1 Internet Fax Expansion Kit

Additional Sharpdesk™ licenses:

- MX-USX1 x 1 user
- MX-USX5 x 5 users
- MX-US10 x 10 users
- MX-US50 x 50 users
- MX-USA0 x 100 users

Available at a later date

MX-PEX1 Fiery Print Controller

MX-FRX2U Data Security Kit (commercial version)

MX-FRX2 Data Security Kit
Enables data encryption and erasure

MX-AMX1 Application Integration Module

MX-AMX2 Application Communication Module

MX-AMX3 External Account Module
Enables machine customisation by third-party software developers

MX-4501N/MX-3501N MX-4500N/MX-3500N

Digital Full Colour Multifunction Printer



SPECIFICATIONS

General

Type	Desktop
Technology	Laser
Engine speed (max.) ^{*1}	A4, portrait A3
MX-4501N/MX-4500N	Colour: 35 cpm/ppm Black & white: 45 cpm/ppm
MX-3501N/MX-3500N	Colour: 35 cpm/ppm Black & white: 35 cpm/ppm
Paper size	Max. A3 wide, min. A5R
Paper weight	60 – 105 gsm (bypass: 55 – 209 gsm)
Paper capacity	Standard: 1,100 sheets (two 500-sheet trays and 100-sheet multi-bypass tray) Maximum: 5,600 sheets
Warm-up time	Less than 240 sec.
Memory	[Copier memory] Standard 768MB [Printer memory] Standard 640MB [HDD] 80GB*2 (MX-4501N/MX-3501N), 40GB*2 (MX-4500N/MX-3500N)
Power requirements	Rated local AC voltage ±10%, 50/60 Hz
Power consumption (max.)	1.84 kW (200 to 240V)
Dimensions (W x D x H)	MX-4501N/MX-3501N: 645 x 670 x 960 mm MX-4500N/MX-3500N: 645 x 670 x 950 mm
Weight (approx.)	MX-4501N/MX-3501N: 123 kg MX-4500N/MX-3500N: 114 kg
Features	Card shot, edge/centre erase, job build, pre-heat/auto power shut-off modes, user authentication (1,000 accounts)

Copier

Original paper size	Max. A3
First copy out time ^{*3}	Full colour: 6.9 sec. Black & white: 4.1 sec. (MX-4501N/MX-4500N), 4.7 sec. (MX-3501N/MX-3500N)
Continuous copy	Max. 999 copies
Resolution	Scan: 600 x 600 dpi, 600 x 300 dpi Print: 600 x 600 dpi
Gradation	Equivalent to 256 levels
Zoom range	25 to 400% in 1% increments 25 to 200% using DSPF (MX-4501N/MX-3501N) or RSPF (MX-4500N/MX-3500N)
Preset copy ratios	Metric: 10 ratios (5R/5E), inch: 8 ratios (4R/4E)
Features ^{*4}	Auto paper selection (mixed/random size feeding), auto magnification selection, paper type selection, auto tray switching, rotation copy, electronic sorting, network tandem copy, book copy, margin shift, dual page copy, multi-shot (4-in-1, 2-in-1), cover/transparency/tab page insertion, pamphlet copy, 2-sided copy orientation change, XY zoom, B/W reverse, mirror image, duplex copy, toner save mode, reserved copy, job programme, image repeat, irregular original/paper size input, stamps (date, character, page), multi-page enlargement, tab copy, centering, proof copy, document control, auto colour selection, enhanced Sharp auto colour mode, auto calibration

Network Scanner

Scan method	Push scan (via operation panel) Pull scan (with TWAIN-supporting application)
Resolution	Push scan: 100, 200, 300, 400, 600 dpi Pull scan: 75, 100, 150, 200, 300, 400, 600 dpi 50 to 9600 dpi
File formats	TIFF, PDF, encrypted PDF, JPEG (colour only)
Scanner utilities	Sharpdesk™
Scan destinations	Scan to e-mail, desktop, FTP server, network folder, USB memory
Features	Internet fax ^{*5} , PC-Internet fax transmission ^{*5} , enhanced Sharp auto colour mode, mixed size original scanning, LDAP support, direct entry (address/subject/message), 999 one-touch dials, 500 group dials, 48 job programmes, broadcasting, long original scanning (max. 800 mm), auto colour selection

Document Filing

Document filing capacity	MX-4501N/MX-3501N Main and custom folders: 30GB, 4200 pages ^{*6} or 3000 files Quick file folder: 10GB, 1400 pages ^{*6} or 1000 files MX-4500N/MX-3500N Main and custom folders: 10GB, 1400 pages ^{*6} or 1000 files Quick file folder: 10GB, 1400 pages ^{*6} or 1000 files
Stored jobs	Copy, print, scan, fax transmission ^{*7}
Storage folders	Quick file folder, main folder, custom folder (max. 500 folders)
Confidential storage	Password protection

Network Printer

Resolution	600 x 600 dpi
Enhanced resolution	600 x 1200 dpi for B/W printing with PS Expansion Kit
Interface	USB 1.1 (Windows® 98/Me/2000/XP, Windows Server™ 2003) USB 2.0 high-speed (Windows® 2000/XP) 10Base-T/100Base-TX
Supported OS ^{*8}	Windows NT® 4.0 SP5 or later, Windows® 2000, Windows Server™ 2003, Windows® XP, Windows® 98/Me, Mac OS 9.0 to 9.2.2, Mac OS X 10.1.5, 10.2.8, 10.3.3 to 10.3.9, 10.4
Network protocols ^{*8}	TCP/IP, IPX/SPX (NetWare), NetBEUI, EtherTalk (AppleTalk)
Printing protocols	LPR, Raw TCP (port 9100), POP3 (e-mail printing), HTTP, Novell Printserver application with NDS and Bindery, FTP for downloading print files, EtherTalk printing, IPP
PDL emulation	Standard: PCL 6/5c Option ^{*9} : PS3 emulation
Available fonts	80 fonts for PCL, 136 fonts for PS3 emulation ^{*9}
Features ^{*4} *10	Network tandem print, RIP Once/Print Many, job retention (print hold, proof print, confidential print), direct PDF/TIFF/JPEG printing, carbon copy print, duplex print, printer administration utility & status monitor, IP/MAC address filtering and port/protocol management, font and form download, pamphlet style, binding edge, N-up (2/4/6/8/9/16), paper/output tray selection, cover insertion, transparency interleave, fit to page, watermarks, offset output, form overlay, auto configuration, barcode font compatibility, tab print, poster print

Black & White Facsimile (optional MX-FXX1 required)

Compression method	MH/MR/MMR/JBIG
Communication protocol	Super G3/G3
Transmission time	Less than 3 seconds ^{*11}
Modem speed	33,600 bps to 2,400 bps with automatic fallback
Transmission resolution	Standard: 203.2 x 97.8 dpi Extra Fine: 406.4 x 391 dpi
Recording width	A3 to A5
Memory	8MB flash memory
Grey scale levels	Equivalent to 256 levels
Features	Duplex transmission/reception, quick on-line transmission, error correction mode, F-Code compatibility (confidential, relay broadcast), LDAP support, 999 one-touch dials, 500 group dials, 48 job programmes, broadcasting number registration, polling, memory transmission/reception, auto reduction (transmission/reception), rotation transmission/reception, print actual size, 2-in-1 transmission, long original transmission (max. 800 mm), PC-Fax transmission, timer transmission, paperless faxing with inbound routing to e-mail, activity report, anti-junk fax, dual page scan, mixed size original scanning

Options

Please refer to the Options section on the previous page.

*1: Copy mode: When copying same document continuously on portrait A4 plain paper in non-offset mode. Print mode: When printing same document continuously on portrait A4 plain paper in non-offset mode, excluding processing time. *2: 1GB = One billion bytes when referring to hard drive capacity. Actual formatted capacity is less. *3: Portrait feeding of A4 sheets from 1st paper tray, using document glass, without Auto Colour Selection and Auto Colour mode, polygon in rotation. *4: Some features require option(s). *5: Optional MX-FWX1 required. *6: Measured using Sharp's standard chart (A4 with 6% coverage, black & white). The Quick File Folder shares the HDD with the Job Build function; up to 10GB of data storage is available when using both functions. The storage capacity will be less for colour pages. *7: Optional MX-FXX1 required. *8: Optional MX-PKX1 required for Mac OS and EtherTalk. *9: Optional MX-PKX1 required. *10: Some features are not available according to the printer driver used. *11: Based on Sharp's standard chart with approx. 700 characters (A4 portrait) at standard resolution in Super G3 mode, 33,600 bps, JBIG compression.

SHARP



MX-3501N – 5 Star Exceptional



MX-4501N – 5 Star Exceptional



Design and specifications are subject to change without prior notice. All information was correct at time of print. The ENERGY STAR logo is a certification mark and may only be used to certify specific products that have been determined to meet the ENERGY STAR programme requirements. ENERGY STAR is a US registered mark. The ENERGY STAR guidelines apply to products only in the US, Europe, Australia, New Zealand and Japan. Windows and Windows NT are registered trademarks of Microsoft Corporation. All other company names, product names and logotypes are trademarks or registered trademarks of their respective owners. ©Sharp Corporation 2006 Ref: BR-MX-4501N/MX-3501N/MX-4500N/MX-3500N. All trademarks acknowledged. E&OE.