

Aficio® 1060 & 1075

Versatile Document Management ...
Copy/Print Systems



RICOH®

Aficio® 1060 & 1075

Designed to support the document workflow and productivity needs of today's networked office, Central Reprographics Department and Print-on-Demand environments.

The Aficio® 1060 & 1075 systems offer complete scanning and document management to ensure seamless, uninterrupted workflow for on-demand print production and network connectivity at 60 & 75 ppm. Plus, offer a host of highly advanced finishing capabilities for professional output.

ADVANTAGE



Aficio® 1060 Digital System

Aficio® 1075 Digital System

RICOH

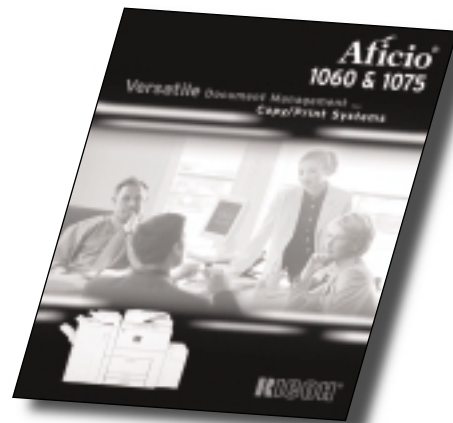
RICOH® has combined ingenious engineering with cutting-edge technology to deliver the utmost in...

- Consistent Reliable Production
- High Quality Imaging
- High-Performance Printing

The TOTAL DIGITAL SOLUTION

Advanced digital technology empowers the Aficio 1060 & 1075 to handle your most demanding business applications.

- **One Pass Duplex Scanner maximizes productivity like never before!**
- True 1,200 dpi resolution
- 8,300 sheet total paper capacity
- 100-sheet Automatic Document Feeder
- Scan Once, Print Many
- Scan and Print at speeds of 60 and 75 images per minute, respectively
- Covers, Tabs, Chapters, Collating, Page Numbering, Stamping, Stapling or Punching
- A large, user-friendly Touch Panel Display



True 1,200 x 1,200 dpi resolution produces crisp text and precision graphics.

EFFICIENCY

Smart Document Management

Ready to take on high volume copy/print jobs, the Aficio 1060 & 1075 provide total control over the input, management and output of your mission critical documents. Enhanced scanning capability (optional) brings versatility to an all-time high, integrating hard copy documents into digital networks. From the Aficio 1060 & 1075's control panel, you can scan documents to e-mail for distribution when the Printer/Scanner Kit is installed.



Document Server allows you to manage your documents.

The **Document Server** capability promotes productivity within a network and a "paperless" environment where users can view and manage all stored information from their desktop.

The dynamic Document Server boosts productivity, linking all electronically created and paper-based originals from various applications, enabling you to manage your documents and perform many other workflow-enhancing functions:

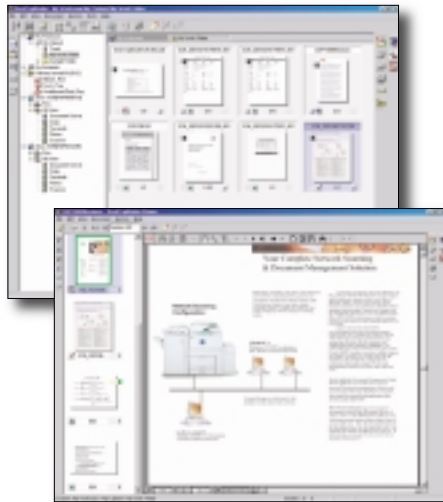
- File Merge Printing
- Print-on-Demand
- Proof Printing
- Scanned Page Printing
- Secure Printing

Scan to E-mail (standard with Printer/Scanner Kit) provides a powerful easy-to-use solution, which enables scanning of hard copy documents directly to e-mail to significantly boost productivity.

- Ability to scan to multiple e-mail addresses via an intuitive touch panel
- Scan documents from either the document feeder or platen glass
- Store up to 2,000 e-mail addresses
- Documents are sent in PDF or TIFF format



Scan to E-mail via an intuitive touch panel display.



DeskTopBinder offers a variety of viewing options and functions.

The **DeskTopBinder™** document management program (standard with Printer Kit) lets you display saved documents, create notes, view and combine different documents/formats, and print them directly from the standard toolbar, all from a single application.

- Input paper documents into the DeskTopBinder from your network scanner
- Convert image files into text files, multi-formatted to single-format documents
- Export files to specific applications without file format conversion
- View the Aficio 1060 or 1075's Document Server, so you can reprint and copy the document from the system's hard drive
- Create shared file folders and authorize access control within your network



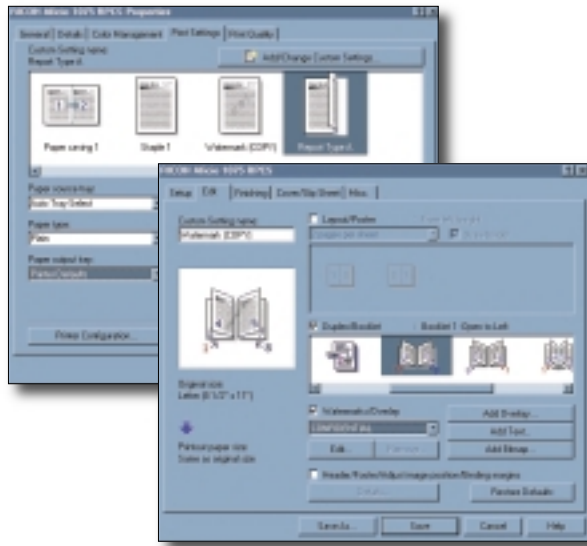


SIMPLICITY

Get Connected...

Bring the advanced Printer Kit (option) on board to dramatically increase your document processing power and streamline your local or network printing applications. You'll benefit from exceptional 60 or 75 ppm laser printing, superior true 1,200 dpi image quality, along with sophisticated finishing to satisfy all job requirements!

PCL5e/PCL6 is standard, assuring utmost compatibility with all major PC applications, and PCL drivers are available for Windows 95/98/2000/XP/ME and NT 4.0. An optional Adobe® PostScript3 module offers drivers for advanced applications, plus the latest Macintosh OS.



The Aficio 1060 & 1075 support Ricoh's **RPCS™ (Refined Print Command Stream)**. An intuitive, simple-to-operate icon-based driver user interface which allows you to select any print job setting and run any print job with just one click. Users can save different print settings for different jobs, efficiently store them under a user-created icon, and instantly generate professional-looking documents.

SmartNetMonitor's local network lists identify supported devices.

Address	Model Name	Name	Printer Status	Copier Status	Fax Status	Scanner Status
172.16.35.21	H5757280	H5757230A Z1.5	Ready	Ready	Ready	Ready
172.16.35.28	Aficio 7080	RHPC214AP	Ready	Ready	Ready	Ready
172.16.35.29	Aficio 850 EB-185	Aficio 850 EB-105	Ready	Ready	Ready	Ready
172.16.35.31	E-710	Color Controller E-710	Ready	Ready	Ready	Ready
172.16.35.32	COLOR_AF204	NJWCM4GAP204_PS	Ready	Ready	Ready	Ready
172.16.35.34	H08672200	H0867230D 1.3.6	Ready	Ready	Ready	Ready
172.16.35.35	RICOH LASER AP2800	NJWOPGF4V62800_PS	Ready	Ready	Ready	Ready
172.16.35.38	Aficio AP2700	AP2700_DMA000L_PS	Ready	Ready	Ready	Ready
172.16.35.42	H5757280	H5757230A Z1.5	Ready	Ready	Ready	Ready
172.16.35.43	COLOR_AF305	NJWCT30A_AF305_PS	Ready	Ready	Ready	Ready
172.16.35.44	Aficio AP3800C	RHPC4040D	Ready	Ready	Ready	Ready
172.16.35.45	H08672200	H0867230E 1.3.7	Ready	Ready	Ready	Ready
172.16.35.48	COLOR_AF308D	AP3800_WPM_PS	Ready	Ready	Ready	Ready
172.16.35.49	COLOR_AF308D	AP3800_MKTDEV	Ready	Ready	Ready	Ready
172.16.35.238	COLOR_AF305	AP305_YAKTSON_PS	Ready	Ready	Ready	Ready

With **SmartNetMonitor** printer management software, you can monitor and manage the Aficio 1060 & 1075 remotely. Get information on every Ricoh system on your shared network from your desktop, so you know the availability, configuration, even paper/toner levels of each device, or group printers together for easy supervision.



QUALITY

The Perfect Finish

The Aficio 1060 & 1075's selection of hi-tech Finishing Capabilities output all your jobs swiftly and cost-effectively time after time, keeping your business running smoothly.

Three impressive **3,000-sheet Finishers** handle it all. One is equipped with a **50-sheet multi-position staple capacity**, and another with a **100-sheet stapler**.

Or perhaps professional **saddle stitched output** is on your menu of requirements. This hi-tech capability partners with the third optional Finisher, which also has a 50-sheet multi-position staple capacity, to give you finished booklets that are stapled in the center and conveniently folded.

Add the user selectable **two or three hole-punch unit** offered with any of these Finishers, and productivity stays smooth as output is punched individually as it exits the system.

100-Sheet Finisher



Saddle Stitch Finisher with 9-bin mailbox



50-Sheet Finisher with Interposer





Value-Added Flexibility

The Aficio 1060 & 1075's **Interposer Capability**, provides even more flexibility by inserting pre-printed or color output anywhere within your documents. If you need a color cover or require special pages to be distributed throughout your document...just place the sheets in the designated paper tray and tell the system where to insert them!

The Interposer allows you to seamlessly integrate color and black-and-white pages anywhere within your document.

Double Your Output With Connect Copy/Connect Print

Team together two systems – either the Aficio 1060 & 1075, two Aficio 1060s, or two Aficio 1075s – and have a production powerhouse with your output effectively doubled. Achieve speeds up to 150 pages per minute, and decrease costs significantly. Plus, you'll always have a back-up system for standard “walk-up” or “production” applications whenever needed.



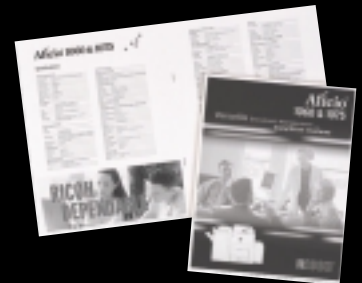
Variety of Staple Positions



2- or 3-Hole Punch Capability



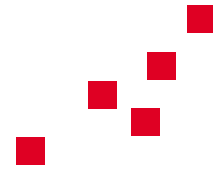
Saddle-Stitched Booklets



Tabbed Pages



Aficio® 1060 & 1075



Specifications

General Specifications

Printing Process:	Four laser beams and electro-photographic printing
Configuration:	Console
Standard Memory:	128 MB/40 GB
Warm Up Time:	5 minutes
Quantity Indicator:	1 to 999
Power Source:	120V/60Hz/20A
Dimensions (WxDxH):	28" x 30" x 47"
Weight:	441 lbs.

Paper Supply

Paper Feed:	1st Tray: 1,550 sheets x 2 (tandem) 2nd and 3rd Tray: 550 (User Adjustable)
Paper Size:	5/2" x 8/2" to 12" x 18" through bypass
Bypass:	100 sheets
Paper Weight:	14 lb. Bond - 34 lb. Bond/14 lb. Bond - 110 lb. Index (Bypass-Thick Paper Mode)
Total:	4,300 sheets

System Specifications

Speed

First Copy:	3.5 seconds Face Up 5.3 seconds Face Down
Copying Speed:	Aficio 1060: 60 copies/minute - multiple sets (Letter/Legal) Aficio 1075: 75 copies/minute - multiple sets (Letter/Legal)
Copy Resolution:	True 1,200 x 1,200 dpi
Gray Scale:	256 levels

Original/Copy Size

Original Type:	Book/Sheet
Original Size:	Up to 11" x 17" (12" x 18" using Platen)
Copy Size:	5/2" x 8/2" to 11" x 17" (12" x 18" using Bypass Tray)

Reduction/Enlargement

Reproduction Ratios:	50%, 65%, 73%, 78%, 85%, 93%, 121%, 129%, 155%, 200%, 400%
Zoom:	25% - 400% in 1% increments

System Accessories

Automatic Document Feeder

Original Size:	5/2" x 8/2" to 11" x 17"
Original Paper Weight:	11 lb. Bond - 34 lb. Bond (simplex)/14 lb. Bond - 34 lb. Bond (duplex)
Original Stack Capacity:	100 sheets

LCT (Large Capacity Tray)

Paper Size:	8/2" x 11"
Paper Weight:	14 lb. Bond - 34 lb. Bond
Paper Capacity:	4,000 sheets (20 lb. Bond)
Dimensions (WxDxH):	12.6" x 18.3" x 26.4"
Weight:	Less than 44 lbs.

LG (8/2 x 14) Option with LCT

Paper Size:	8/2" x 14"
-------------	------------

9-Bin Mailbox (option to be equipped with SR850 or SR860 Finisher)

No. of Bins:	9 bins
Stack Capacity Per Bin:	100 sheets
Paper Size:	5/2" x 8/2" to 11" x 17"
Dimensions (WxDxH):	22" x 24" x 27"
Weight:	Less than 33 lbs.

Copy Tray

Dimensions (WxDxH):	16" x 13.4" x 2.8"
Paper Capacity:	500 Sheets (8/2" x 11"); 250 Sheets (8/2" x 14", 11" x 17")
Weight:	1.41 lbs.

11 x 17 Tray Kit

Paper Size:	8/2" x 11", 8/2" x 14" SEF, 11" x 17" SEF
Dimensions (WxDxH):	20" x 8.6" x 21.4"
Paper Capacity:	1,000 sheets
Weight:	24.2 lbs.

Tab Sheet Holder

Dimensions (WxDxH):	11" x 4.5" x 2.8"
Weight:	.55 lbs.

**RICOH
DEPENDABLE**

SR840 Finisher w/100 Sheet Stapler

Shift Tray

Stack Capacity:	3,000 Sheets (8 1/2" x 11"); 1,500 Sheets (8 1/2" x 14", 12" x 18")
Paper Size:	5 1/2" x 8 1/2" to 12" x 18"
Paper Weight:	14 lb. Bond - 110 lb. Index

Stack Capacity with Stapler

Staple capacity per set:	2-100 Sheets (8 1/2" x 11") 2-50 Sheets (8 1/2" x 11" SEF, 8 1/2" x 14", 11" x 17")
--------------------------	--

Staple Position:	Top, bottom, 2 staples, top slant
------------------	-----------------------------------

Proof Tray

Stack Capacity:	500 Sheets (5 1/2" x 8 1/2" to 8 1/2" x 11") 250 Sheets (8 1/2" x 14" to 12" x 18")
-----------------	--

Paper Size:	5 1/2" x 8 1/2" to 12" x 18"
-------------	------------------------------

Paper Weight:	14 lb. Bond- 110 lb. Index
---------------	----------------------------

Dimensions (WxDxH):	31.5" x 28.7" x 38.6"
---------------------	-----------------------

Weight:	143.3 lbs. (Finisher only)
---------	----------------------------

Hole Punch Option: 2 or 3 holes user selectable

Jogger Option:	To be equipped with the SR840 Finisher
----------------	--

SR850 Finisher w/50 Sheet Stapler

Shift Tray

Stack Capacity:	3,000 Sheets (8 1/2" x 11"); 1,500 Sheets (8 1/2" x 14", 12" x 18")
Paper Size:	5 1/2" x 8 1/2" to 12" x 18"
Paper Weight:	14 lb. Bond - 110 lb. Index

Staple Capacity

Same Paper Size:	50 sheets (5 1/2" x 8 1/2" or 8 1/2" x 11") 30 Sheets (8 1/2" x 14" to 12" x 18")
------------------	--

Mixed Paper Size:	30 Sheets (5 1/2" x 8 1/2", 8 1/2" x 11", 11" x 17")
-------------------	--

Staple Position:	Top, bottom, 2 staples, top slant
------------------	-----------------------------------

Proof Tray

Stack Capacity:	250 sheets (5 1/2" x 8 1/2" to 8 1/2" x 11") 50 sheets (8 1/2" x 14" to 12" x 18")
-----------------	---

Paper Size:	5 1/2" x 8 1/2" to 12" x 18"
-------------	------------------------------

Paper Weight:	14 lb. Bond - 90 lb. Index
---------------	----------------------------

Dimensions (WxDxH):	28" x 24.8" x 38.4"
---------------------	---------------------

Weight:	143 lbs. - with punch
---------	-----------------------

Hole Punch Option: 2 or 3 holes user selectable

SR860 50 Sheet Finisher with Saddle Stitch

Upper Shift Tray

Paper Capacity:	500 Sheets (8 1/2" x 11") 250 Sheets (8 1/2" x 14", 12" x 18")
-----------------	---

Paper Size:	5 1/2" x 8 1/2" to 12" x 18"
-------------	------------------------------

Paper Weight:	14 lb. Bond - 110 lb. Index
---------------	-----------------------------

Lower Shift Tray

Paper Capacity:	2,500 sheets (8 1/2" x 11 LEF) 1,250 Sheets (8 1/2" x 11 SEF, 8 1/2" x 14", 12" x 18")
-----------------	---

Paper Size:	5 1/2" x 8 1/2" to 12" x 18"
-------------	------------------------------

Paper Weight:	14 lb. Bond- 110 lb. Index
---------------	----------------------------

Staple Capacity

Same Paper Size:	50 Sheets (5 1/2" x 8 1/2" or 8 1/2" x 11") 30 Sheets (8 1/2" x 14" or 12" x 18")
------------------	--

Mixed Paper Size:	30 Sheets (5 1/2" x 8 1/2, 8 1/2" x 11", 11" x 17")
-------------------	---

Saddle Stitch:	15 sheets (8 1/2" x 11, 11" x 17")
----------------	------------------------------------

Staple Position:	Top, bottom, 2 staples, top slant
------------------	-----------------------------------

Saddle Stitch Position:	Center 2 positions
-------------------------	--------------------

Center Folding Without Stitch:	1 sheet
-----------------------------------	---------

Proof Tray

Paper Capacity:	250 Sheets (5 1/2" x 8 1/2" or 8 1/2" x 11") 50 Sheets (8 1/2" x 14" to 12" x 18")
-----------------	---

Paper Size:	5 1/2" x 8 1/2" to 12" x 18"
-------------	------------------------------

Paper Weight:	14 lb. Bond - 90 lb. Index
---------------	----------------------------

Dimensions (WxDxH):	28" x 24.8" x 38.4"
---------------------	---------------------

Hole Punch Option: 2 or 3 holes user selectable

Interposer (available with all 3 finishers)

Paper Size:	5 1/2" x 8 1/2" to 11" x 17"
-------------	------------------------------

Paper Weight:	17 lb. Bond - 110 lb. Index
---------------	-----------------------------

Paper Capacity:	200 Sheets
-----------------	------------

Paper Set:	Center position
------------	-----------------

Dimensions (WxDxH):	20" x 24" x 8"
---------------------	----------------

Weight:	26.4 lbs.
---------	-----------

Print Controller Specifications*

Print Speed:	Aficio 1060: 60 prints/minute Aficio 1075: 75 prints/minute
--------------	--

CPU:	RM7000A, 375 MHz
------	------------------

Interface:	Parallel IEEE1284, Ethernet Network Interface Card 10/100BaseT (Standard); Wireless LAN, Interface USB 2.0, IEEE1394 (Optional)
------------	---

Network Protocol:	TCP/IP, IPX/SPX, AppleTalk, NetBEUI
-------------------	-------------------------------------

Memory Capacity:	128 MB (Standard); 128 MB and 256 MB (Optional); (256 MB Memory required for printing)
------------------	---

Language:	RPCS (Refined Print Command Stream); PCL5e/PCL6 (Standard); Adobe PostScript3 (Optional)
-----------	---

Print Resolution:	RPCS: 300/600/1200 dpi; PCL5e: 300/600 dpi; PCL6: 600/1200 dpi; PS3: 300/600/1200 dpi
-------------------	--

Drivers for PCL5e:	Windows 95/98/ME/2000/NT4.0/XP
--------------------	--------------------------------

Drivers for PCL6:	Windows 95/98/ME/2000/NT4.0/XP
-------------------	--------------------------------

Drivers for PS3:	Windows 95/98/ME/2000/NT4.0/XP Macintosh 8.6 or higher (excluding 10.0)
------------------	--

Utilities:	SmartNetMonitor
------------	-----------------

Drivers for RPCS:	Windows 95/98/ME/2000/NT4.0/XP
-------------------	--------------------------------

* DeskTopBinder comes bundled with Printer Kit or Printer/Scanner Kit.

Printer Accessories

- (1) Printer/Scanner Kit; (2) Printer Kit; (3) Adobe PostScript3 Option;
(4) 128 MB Memory Option; (5) 256 MB Memory Option; (6) IEEE1394 I/F Option;
(7) USB 2.0 I/F Option; (8) Wireless LAN I/F Option

Scanner Specifications*

Scan Speed:	75 images/minute (Aficio 1060/1075)
-------------	-------------------------------------

Imaging

Optical Resolution:	600 dpi
---------------------	---------

Output Format:	PDF, TIFF, JPEG
----------------	-----------------

Connectivity

Interface Support:	10/100BaseT (Standard); Wireless LAN - IEEE802.11b (Optional); IEEE1394 (Optional)
--------------------	---

Bundled Drivers:	Network TWAIN
------------------	---------------

Scan to E-mail

Scan to E-Mail:	SMTP Gateway and TCP/IP required
-----------------	----------------------------------

Maximum Destination Addresses:	100
-----------------------------------	-----

Maximum Stored Destination Addresses:	2,000
--	-------

* Must order Printer/Scanner Kit for scanning capabilities.

NOTES: Under Printer Accessories Item 1 and Item 2 cannot be installed together.

Additional Memory option, either Item 4 or Item 5 is mandatory for Item 1 and Item 2. Only one item out of Item 6, Item 7 and Item 8 can be installed.

Specifications subject to change without notice.

Aficio® 1060 & 1075

Configured to Meet Your Requirements

Copier Configuration



Shown with 50-Sheet Finisher and Interposer

- Aficio 1060 & 1075 System
- Large Capacity Tray
- Finisher
 - 50 Sheet (SR850)
 - 100 Sheet (SR840)
 - Saddle Stitch Finisher (SR860)
- 2 or 3 Hole Punch
- Interposer

Copier/Printer Configuration



Shown with Saddle Stitch Finisher and 9-Bin Mailbox

- Aficio 1060 & 1075 System
- Large Capacity Tray
- Finisher
 - 50 Sheet (SR850)
 - 100 Sheet (SR840)
 - Saddle Stitch Finisher (SR860)
- 2 or 3 Hole Punch
- 9-Bin Mailbox
- Printer Kit Type 1075
- Adobe PostScript3
- Memory (256 MB required for printing)
 - 128 MB
 - 256 MB
- DeskTopBinder

Copier/Printer/Scanner Configuration



Shown with 100-Sheet Finisher

- Aficio 1060 & 1075 System
- Large Capacity Tray
- Finisher
 - 50 Sheet (SR850)
 - 100 Sheet (SR840)
 - Saddle Stitch Finisher (SR860)
- 2 or 3 Hole Punch
- Interposer
- Printer/Scanner Kit Type 1075
- Adobe PostScript3
- Memory (256 MB required for printing)
 - 128 MB
 - 256 MB
- DeskTopBinder

Features

- | | | | | |
|-----------------------|----------------------------------|------------------------------------|-------------------------|--------------------|
| ■ Auto Image Density | ■ Copy Counter | ■ Electronic Sort | ■ Original Counter | ■ Stamping |
| ■ Auto Paper Select | ■ Delete Inside/Outside | ■ Energy Saver Mode | ■ Paper Designate | ■ User Codes (500) |
| ■ Auto Reduce/Enlarge | ■ Directional Size Magnification | ■ Estimated Finishing Time Counter | ■ Photo Mode | ■ User Program |
| ■ Auto Start | ■ Document Server | ■ Image Shift | ■ Repeat Copy | ■ User Tools |
| ■ Auto Tray Switching | ■ Double Copy | ■ Job Interrupt | ■ Sample Copy | ■ Weekly Timer |
| ■ Border/Center Erase | ■ Dual Language | ■ Job Preset (up to 8 jobs) | ■ Scan Once, Print Many | |
| ■ Chapters | ■ Duplexing | ■ Margin Adjustment | ■ Series Copying | |
| ■ Combine Originals | | | ■ Slip Sheets | |

RICOH®

Image Communication

Ricoh Corporation, Five Dedrick Place, West Caldwell, NJ 07006
 Phone: (973) 882-2000 • Web Site: <http://www.ricoh-usa.com>



EPA 2000 Office Products Partner of the Year (5th consecutive year)
 EPA 2000 Labeling Partner of the Year

Ricoh Corporation has determined that this product meets the Energy Star® guidelines for energy efficiency.



Ricoh Company, Ltd. has been granted a certificate of ISO 9001, which is the International Standard for Quality Systems.

OFFICIAL PRINTER,
 COPPER AND TAX
 OF THE PEAK OF AMERICA



Adobe® PostScript® 3