

SHARP

AR-M450

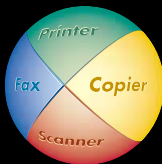
Digital Laser Printer



High-Security Solutions for the Digital Age



Modular System



digital

COPY

PRINT

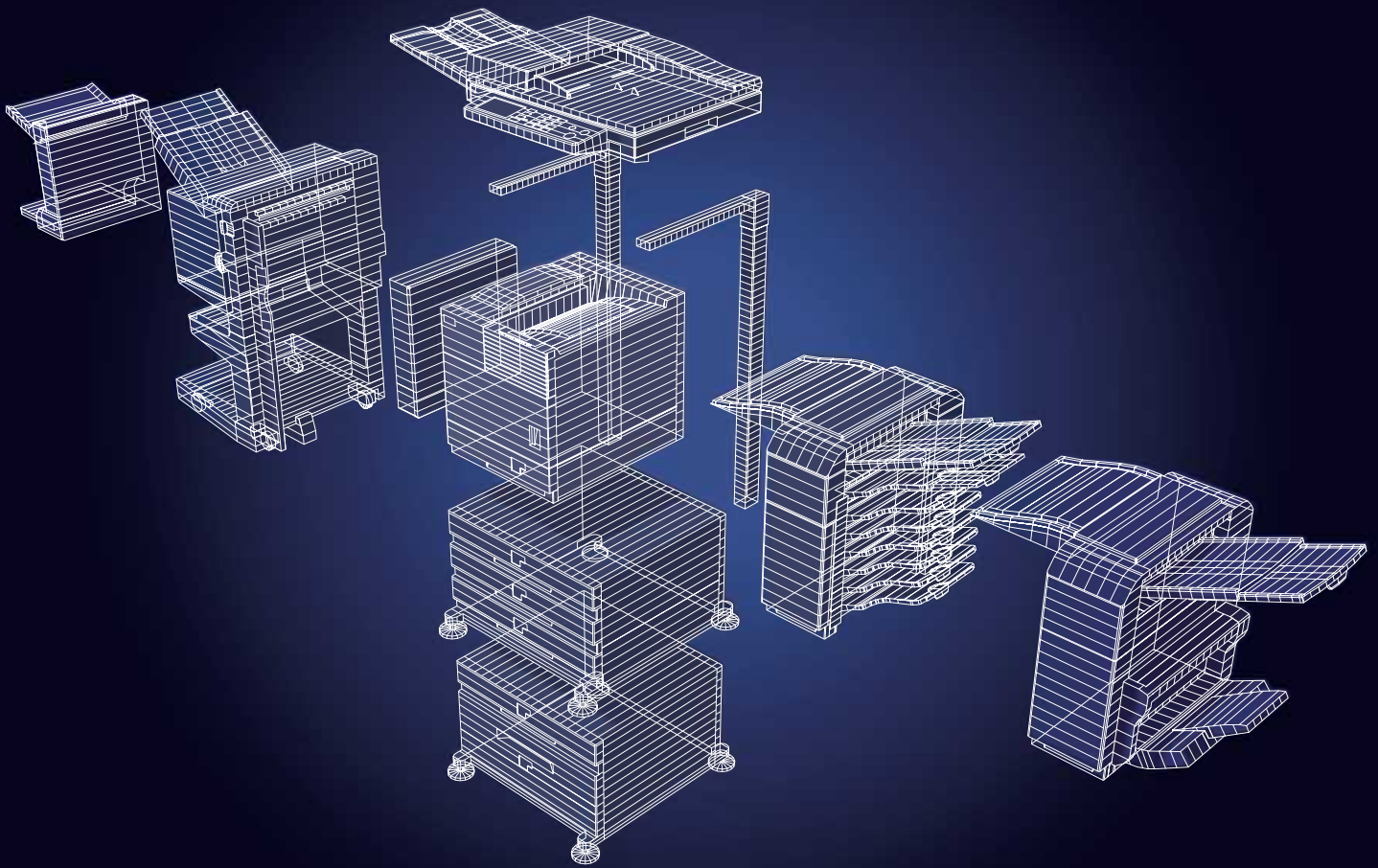
NETWORK PRINT
OPTION

NETWORK SCAN
OPTION

SHARPEDESK
OPTION

FAX
OPTION

PC-FAX
OPTION



The Choice Is Yours – Custom-Made, Ideal Solutions

Combining flexibility with convenience, SHARP's AR-M450 is the option-packed, fully modular document creator. Whether you want to print, copy, scan or fax, the ultra-efficient AR-M450 will play centre stage at the office. Not only does the AR-M450 offer great flexibility, it also comes with a range of practical features to dramatically improve workflow. The AR-M450 from SHARP – ideal solutions for the digital office.



Duplex Model

Reduces paper waste and increases convenience.



Finisher Model

Automates burdensome chores for you.



Network Model

Centralises document creation in the networked office.



Saddle Stitch & Punching Model

Creates professional-looking documents easily.



Full-Function Model

Covers all your document needs in the networked office.

Sharp's Authentic Security Solution

Data Security Kit*

Whenever pages are printed, copied, scanned or faxed, your digital device retains data in its internal memory. With your data stored in this way, it is vulnerable to being retrieved by unauthorised personnel. To prevent such risks to your valuable information, Sharp has developed a solution: the risk-free, high-security system of the AR-M450 with Data Security Kit installed. This system automatically encrypts and erases from the internal memory the temporary document data generated for each print, copy, network scan or fax job. This helps protect your confidential information from even the most sophisticated threats. An essential utility, recommended to all those who handle sensitive information.

IP/MAC Address Filtering

The optional AR-NC5J print server card prevents access by unauthorized users and keeps confidential information safe while you are printing via the network. Only users with registered IP (Internet Protocol) or MAC (Media Access Control) addresses can access the AR-M450.

** When the Data Security Kit is installed, some functions may not be available. Please refer to the footnotes marked "***" (on pages 5 and 7) for more information.*

Award-Winning Multifunction Products



Further proof of Sharp's ascendancy in the industry: Business Equipment Research and Test Laboratories (BERTL) declared the Sharp AR-M450 and AR-M350 the best fully configured multifunction products in the 30-40 ppm and 40-50 ppm categories, respectively.

The High Performance Network Printer for Today's Offices

The intelligent AR-M450 easily handles the printing demands of today's digitally networked offices. Practical features ensure smooth, uninterrupted printing, while the AR-M450's modular options enhance productivity and efficiency in your networked office. With its impressive range of powerful and convenient features, you'll see why the AR-M450 is the printing solution you've been looking for.

HIGH PERFORMANCE PRINTING

High-Speed Printing & Data Processing

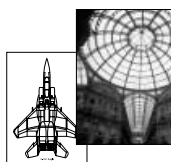
The AR-M450 boasts a continuous print rate of 45 ppm*, ensuring speedy and efficient printing in the networked office. The secret of high-speed printing on the AR-M450 is its 64-bit RISC 200MHz processor, which allows even memory-intensive graphics documents to be processed promptly.



* A4 (8 1/2"x11"), Portrait.

600dpi Crisp and Clear Documents

The AR-M450's laser printer engine produces razor-sharp images and crisp, legible text at 600dpi resolution. Employing digital smoothing technology further enhances the resolution to the equivalent of 1200dpi. The AR-M450 comes complete with Photo Mode for detailed, fine-grained reproductions of photographs and halftone images. Superb quality print jobs that make your work look even better.



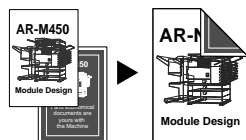
Compatible with HP™ PCL® 6 and PostScript® 3*2

Not only is the AR-M450 compatible with HP™ PCL® 6, but, with the optional PS3 Expansion Kit, it can also handle the latest PDL, PostScript® 3. The AR-M450 effortlessly manages even the most sophisticated documents.



Duplex Printing*2

Efficient and economical document creation is yours with the AR-M450. Doing away with bulky files, duplex printing halves filing space and paper costs.



CONVENIENT PRINT FUNCTIONS

Priority Printing*2

In the Job Status Mode, the operation panel displays a list of all jobs, whether printing, copying, scanning or faxing. See at a glance which job is in progress and where your job is in the queue. You can also change the print queue order with one touch of the LCD screen. Urgent jobs can receive priority, meaning you don't have to wait until other jobs are finished.



Job Status Mode

Bypass Printing

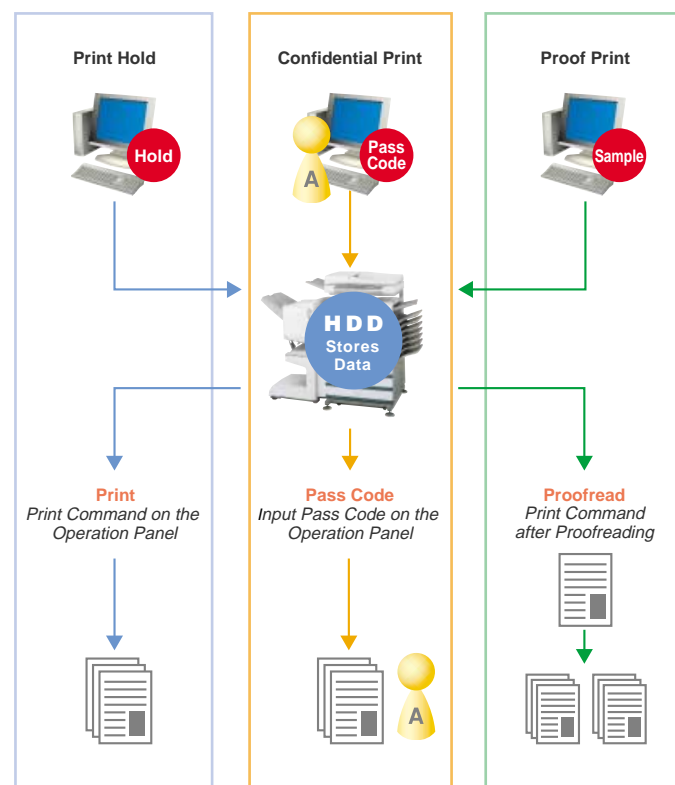
When conventional printers run out of the paper needed for a specific job, the machine grinds to a halt until it is reloaded. With the AR-M450, however, you need never wait on someone else's job; the AR-M450 automatically proceeds to the next possible job in the queue.



Job Control Function*2

The AR-M450 can hold your printing job in the optional hard disk drive, giving you a host of printing conveniences.

- **Print Hold:** With the Job Control Function store your print job in the optional hard disk drive. When you want the documents, go to the AR-M450 and print them directly from its memory.
- **Confidential Print:** The Job Control Function also has a pass code setting to keep your sensitive documents away from prying eyes. Before printing the secure documents the AR-M450 will require verification.
- **Proof Print:** The AR-M450 allows you to check your work before printing it. Print a sample copy of the document, proofread it, and avoid problems of misprinting when doing large print runs.



*1 Optional AR-NC5J is required. Also, optional AR-PK1 is an additional requirement for Macintosh. *2 Options are required.



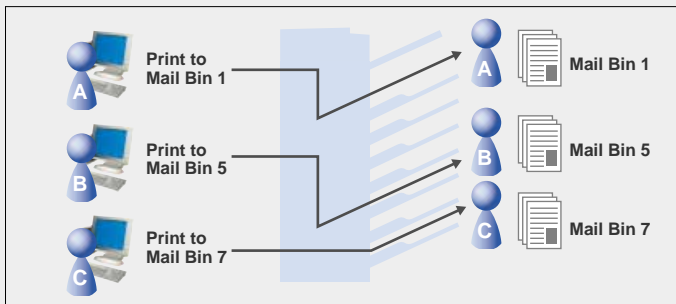
PRODUCTIVE MODULAR OPTIONS

Automated Job Finishing*2

Choose the Finisher or Saddle Stitch Finisher option to automate time-consuming tasks such as sorting and stapling. In concert with the optional Duplex Single Pass Feeder (DSPF) and Duplex Module, the Saddle Stitch Finisher automatically arranges page layout and makes booklets. It is also possible to make punched documents with the optional Punch Module. The AR-M450 lets you create professional-looking pamphlets with ease.

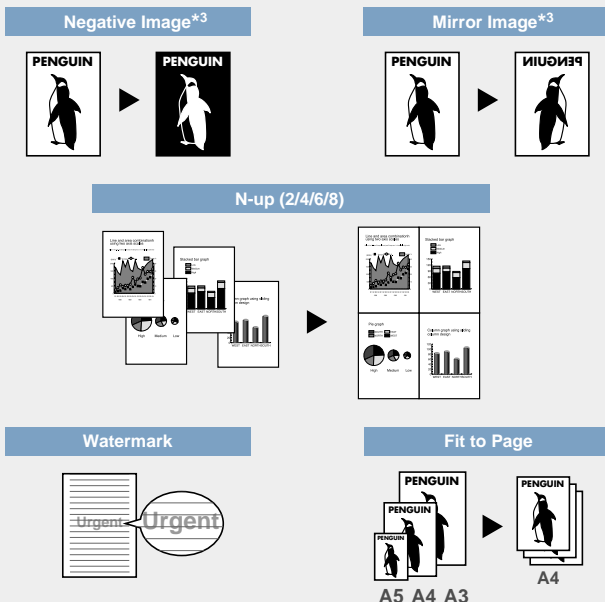
Mail Bin Stacker*2

The optional Mail Bin Stacker is ideal for offices where large groups of people use the same machine. When printing, avoid mixing up your documents with other people's by pre-selecting one of eight destination bins for your documents.



VARIOUS PRINTING FUNCTIONS

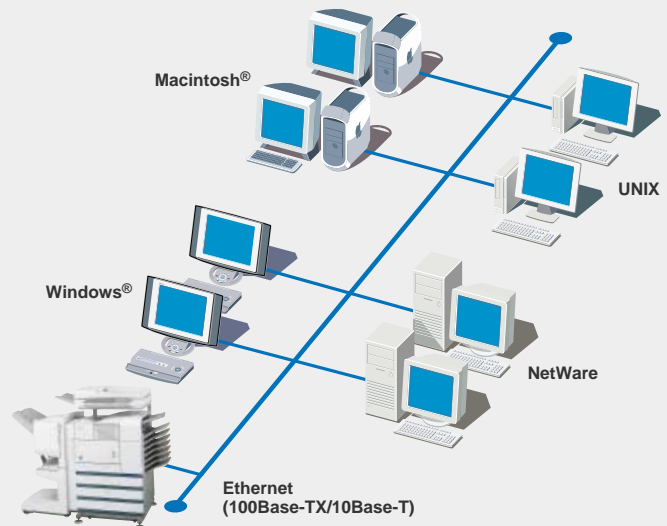
A host of versatile editing functions allow you to create a wide range of documents.



POWERFUL NETWORKING*1

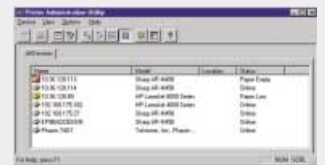
Smooth, Seamless Network Printing

With the optional Print Server Card the AR-M450 can support both 100Base-TX and 10Base-T networks. Heavy network traffic is no problem for the AR-M450 – get used to a smooth flow of documents in your networked office. The AR-M450 also handles mixed-OS environments with ease. It supports combinations of most popular versions of Windows® and Macintosh®. No more cross-platform hassles.



Printer Administration Utility*4

This handy utility software allows network administrators to check the printing status or change the IP address directly from the print server's monitor.



Stay Informed on Printer Status*4

The Printer Status Monitor keeps you informed on the AR-M450's operating conditions. Find out immediately the available paper type, size and quantity and know whether the AR-M450 is ready for your print job.



OTHER FUNCTIONS

- Binding Edge Function
- Transparency Inserts
- Overlay Function
- Paper Source & Output Tray Selection
- Auto Power Shut-Off Mode
- Key Operator Programme
- Process Cartridge for easy maintenance
- Toner Recycling System for reduced running cost

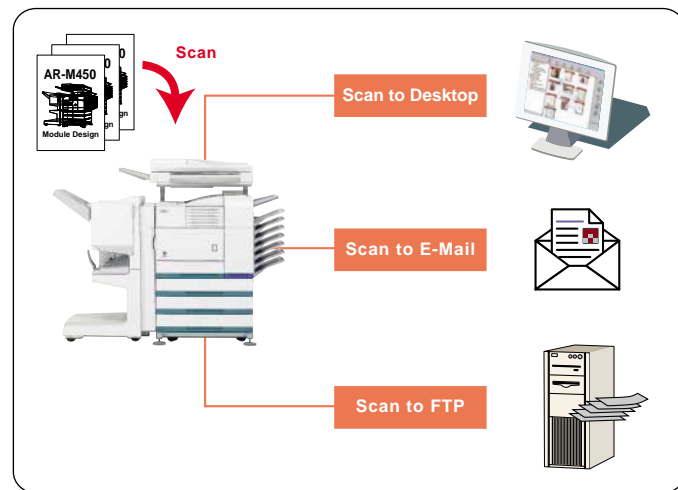
*1 Optional AR-NC5J is required. Also, optional AR-PK1 is an additional requirement for Macintosh. *2 Options are required. *3 Optional AR-PK1 is required. *4 Available in Windows® environments only. Optional AR-NC5J is required.

Enhance Productivity with Powerful Scanning

Clear up excess paper copies and enhance workflow in the networked office with the AR-M450 and its optional Network Scanner Expansion Kit. A speedy one-pass scanner converts your documents (up to A3, 11" x 17") into digital files. Network users can then access those files using Sharpdesk™, a software package which smoothly handles all shared digital files. Streamline your business workflow and watch your document troubles evaporate.

SCAN TO DESKTOP, E-MAIL OR FTP SERVER LDAP VER. 3*2 SUPPORT**1

Network scanning offers a host of convenient scan options. With the touch of a button, scanned files can be forwarded directly to the desktops of PCs installed with Sharpdesk™. And, just as quickly and easily, they can be sent as e-mail attachments or uploaded to a file server for general access.



With LDAP (Lightweight Directory Access Protocol) support, you no longer need to enter the recipient's entire e-mail address on the AR-M450's control panel. Just press the GLOBAL ADDRESS SEARCH button and enter the search name using the keyboard shown on the LCD touch panel. This immediately brings up a matching list of possible recipients. LDAP simplifies this process – just select the name and press "send."



Detected Address List

Compatible with high-security authentication methods such as DIGEST-MD5 and Kerberos, the AR-M450 keeps your sensitive documents away from prying eyes. Select from the following 5 authentication methods:

- **Anonymous:** Connect without entering a user name or password;
- **Simple:** Connect after authenticating your user name and password in plain text;
- **Digest-MD5³:** Connect after authenticating your user name and password converted to Digest-MD5;
- **NTLM³:** Connect after authenticating your user name and password by NTLM;
- **Kerberos³:** Connect after obtaining an access ticket from a KDC server using your user name and password. (Note: Settings must be made separately on the KDC server.)

SHARPDASK™ FOR TOTAL DOCUMENT MANAGEMENT

Sharpdesk™ is a powerful and intuitive desktop document management application that integrates both paper and electronic documents, regardless of the varied applications in which they were created. With Sharpdesk™, you get the tools to give your workflow unprecedented power, speed and efficiency.

User-Friendly Operation

Intelligent File Storage: When using Scan to Desktop to send scanned files to your PC, Sharpdesk™ is activated automatically to save the files in their designated folders.

Powerful Search: Sharpdesk™ retrieves not only regular text files, but also image files that have been converted by OCR into editable text files.

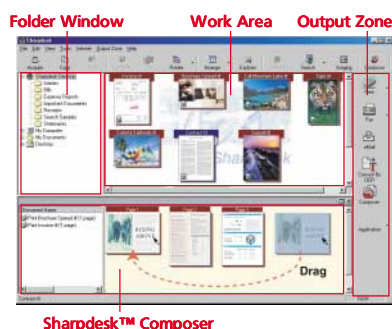
Thumbnail Display for Easy Browsing: Sharpdesk™ lets you browse thumbnail icons for over 200 file types, including TIFF, JPEG and BMP.

Drag-and-Drop Output: Print documents directly from your desktop, send them as e-mail attachments, or convert them to text files using the built-in OCR engine – all with simple drag-and-drop operation.

Sharpdesk™ Composer: Drag and drop to combine separate files into a single, print-ready document – even if they originate from different applications.

Sharpdesk™ Imaging

Use the menu or tool buttons to access a range of useful editing functions, such as combine, split, rotate, and draw. And, for paper-free proofreading, use the Annotation Function to add comments to a shared on-screen document.



OTHER FUNCTIONS

- Handles Originals up to 800mm Long**1
- Maximum file size can be set in 1MB steps from 1-10MB (for Scan to E-mail)**1
- Touch Panel Editing of Subject and File Name (for Scan to E-mail)**1

*1 Available in Windows® environments only. Optional AR-NC5J and AR-NS2 are required. *2 Both AR-NS2 and AR-FX5 are required. *3 This authentication method will be available at a later date. **1 When the Data Security Kit is installed, this function cannot be used.

Automatic Features Reduce Work

With its wide selection of helpful options, the AR-M450 is a document-creating powerhouse. The optional Duplex Single Pass Feeder (DSPF) enhances productivity by allowing you to make documents quickly and efficiently. And handy finishing options automate the process from copying to finishing, saving you valuable time.

FUNCTIONAL COPYING

A3 (11"x17") Duplex Scanning for Duplex Copying

Easily make duplex copies from double-sided documents with the optional Duplex Single Pass Feeder (DSPF), which enables document scanning up to A3 size (11" x 17"). The AR-M450 saves time by requiring only a single scan for double-sided documents. And by doing away with the reversing circuit, the AR-M450 prevents damage to documents. Enjoy hassle-free duplex copying and halve filing space and paper costs.



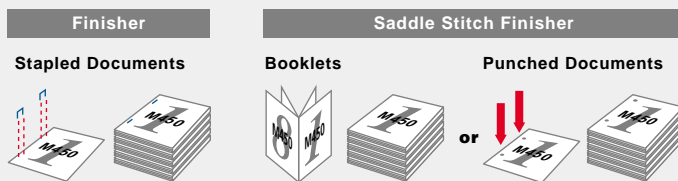
Document Finishing

Sort and staple documents automatically with the time-saving Finisher and Saddle Stitch Finisher options. After arranging the page order of scanned documents in its memory, the AR-M450, in tandem with the optional Finisher, can staple up to 30 pages*¹. The Saddle Stitch Finisher option, meanwhile, can staple up to 50 pages*² and fold documents to make booklets. And with the optional Punch Module, it's possible to punch holes in documents. Both finishing options also automatically sort and separate copy runs for your convenience.



*¹ A4, B5, 8 1/2" x 11", 80 g/m².

*² A4 (8 1/2" x 11") or smaller. 128 g/m² (34 lbs.) x 2 + 80 g/m² (20 lbs.) x 48.



Electronic Sorting

The Electronic Sorting Function allows multiple sets of copied documents to be made quickly and efficiently. A single scan stores up to 50 pages* of a given document in the memory, allowing you to return to work on the original. The AR-M450 then uses the stored version to produce multiple sets of copies in the original order. Avoid the hassle of sorting and arranging pages after copying them with the intelligent AR-M450.

* A4 (8 1/2" x 11").

Job Build for Large Volume Scanning

Even copy jobs exceeding 50 pages* are no trouble for the AR-M450. A maximum of 140 pages* can be stored in lots of up to 50 pages at a time. They are then automatically sorted in the memory and can be subsequently printed out at your convenience. And with the optional hard disk drive, storage can be expanded to 10,000 pages* – easily enough to handle even the most demanding large volume jobs.

* A4 (8 1/2" x 11").

PRODUCTIVE COPYING

High-Speed Copying

The AR-M450 has a continuous copy rate of 45 cpm*, allowing it to quickly produce even large volumes of documents. High-speed copying to improve the workflow in your networked office. * A4 (8 1/2" x 11"), Portrait.



Quick First Copy Time

With its speedy first copy time of 4.6 seconds*, the AR-M450 allows you to pick up your copied documents with the minimum of delay, taking the stress out of urgent copy jobs.

* A4 (8 1/2" x 11"), 1st paper tray, Quick Scan mode, without HDD, and with Polygon mirror running.



Large Paper Capacity, Wide Paper Range

Meet your high-volume copying needs with one of two paper drawer options available, providing a paper capacity of up to 3,100 sheets.



Depending on your printing needs, the drawers can accommodate a wide range of paper sizes and types, including OHP transparencies and heavy stock*.

* Up to 205g/m² (55 lbs.) via the 1st tray of AR-D20/D15.

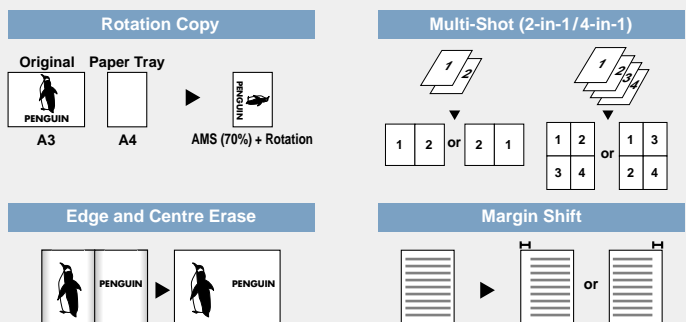
LCD Touch Panel with Animated Guide

The DSPF's touch-sensitive LCD panel makes operating the AR-M450 a breeze. The LCD panel displays the current job status, along with other operational information, to give you a clear overview of your work. Whether printing, copying, scanning or faxing, you'll enjoy a seamless, efficient workflow.



VARIOUS COPYING FUNCTIONS

The AR-M450 makes copying more convenient with its wide range of built-in functions.



- Automatic Paper Selection (APS)
- Automatic Magnification Selection (AMS)
- Auto Tray Switching
- Wide Zoom Range (25 to 400%)
- Audit Function up to 100 accounts
- Scan-to-Memory while Printing
- Dual Page Copy
- Job Programme
- Toner Save Mode

Faxing Has Never Been Easier

For the ultimate document all-rounder, top the AR-M450 off with fax functionality. Installing the optional Fax Expansion Kit enhances efficiency in your office by enabling PC-Fax functionality and Super G3 fax transmission. The versatile AR-M450 also supports the ITU-T F-Code standard and offers you a host of convenient functions. Enjoy smooth fax operation, thanks to such easy-to-use functions as duplex document faxing and one-touch dialling.

LIGHTNING-FAST, HIGH-QUALITY FAXING

High-Speed Fax Transmission

The AR-M450's high-speed Super G3 fax transmission formula allows you to send documents twice as fast as with the conventional G3 formula. And transmission times are faster still, thanks to the high-rate JBIG compression method. An A4 size (8 1/2" x 11") document, for example, can be sent speedily within three seconds*. The AR-M450's high-speed transmission makes long distance or large volume faxing far more economical.

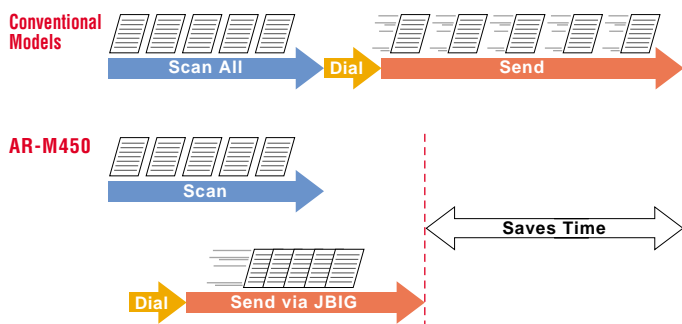
* Based on ITU-T test chart No. 1 at standard resolution. Data transmission time only, not including protocol transmission time.



Quick On-Line Transmission

Upon scanning the first page of your document through the optional Duplex Single Pass Feeder (DSPF), the AR-M450 starts dialling the fax destination immediately. Transmission begins while the remaining pages are being scanned, giving you much faster overall transmission times.

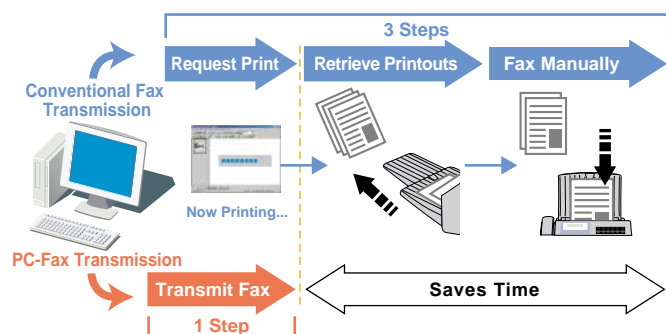
[NB] Quick on-line transmission is only possible if there are no other jobs waiting to be processed.



VERSATILE FAX TRANSMISSION

PC-Fax Functionality

Improve office efficiency straight away by sending faxes directly from your desktop, without having to print them out first. Not only will you save time shuttling between your PC, the printer and the fax machine, you'll also make savings on printing paper. Plus, PC-Fax preserves all the detail of the original, without any deterioration in document quality.



*1 Options are required. **1 When the Data Security Kit is installed, this function cannot be used. **2 When the Data Security Kit is installed, the image of the first page of the original document can be printed on the report only when the transaction is unsuccessful. **3 When the Data Security Kit is installed, this function can be used for faxes, but not for internet faxes. **4 The fax function and Data Security Kit may not function simultaneously. Consult your local Sharp dealer for details.

Duplex Fax Transmission/Reception

Take your double-sided document, place it in the DSPF, and it will automatically scan both sides in a single pass. There's no need for either manual re-scanning or a reversing circuit: the DSPF lets you fax a double-sided A4 Portrait (8 1/2" x 11") in approximately 2 seconds at standard resolution. Of course, the AR-M450 doesn't just send double-sided faxes, it also receives them.



Fax Transaction Report**2

To help you keep track of your fax transmission status, the AR-M450 can print a transaction report with each fax job. Three settings are available, so you can have a transaction report either for each time you send, or for unsuccessful transactions only, or not at all. An additional preset lets you display on the report an image of the first page of the original document.

Supports F-Code Standard

Conforming to the ITU-T F-Code standard, the AR-M450 enables relay broadcasting and confidential transmission with other F-Code supporting machines – even those made by other manufacturers. Fax machines that support F-Code communication allow you to create up to 100 Memory Boxes and set a sub-address and pass code for each of them – ideal for protecting confidential information during transmission and reception.

Built-In Flash Memory

The AR-M450 comes equipped with 2MB of Flash Memory. This acts as an automatic back-up, storing the equivalent of up to 100 pages of A4 size (8 1/2" x 11") paper*. Even if there is a sudden power cut, for example, your scanned data is preserved in the memory. The optional Fax Memory allows you to extend the Flash Memory up to 10MB.

* Based on ITU-T test chart No. 1 at standard resolution.

Internet Fax

Scanned documents saved as TIFF files can be sent worldwide to other ITU-T T-37 Internet fax machines at virtually no cost. Not only is this method cost-effective, it's also much faster than using a phone line.

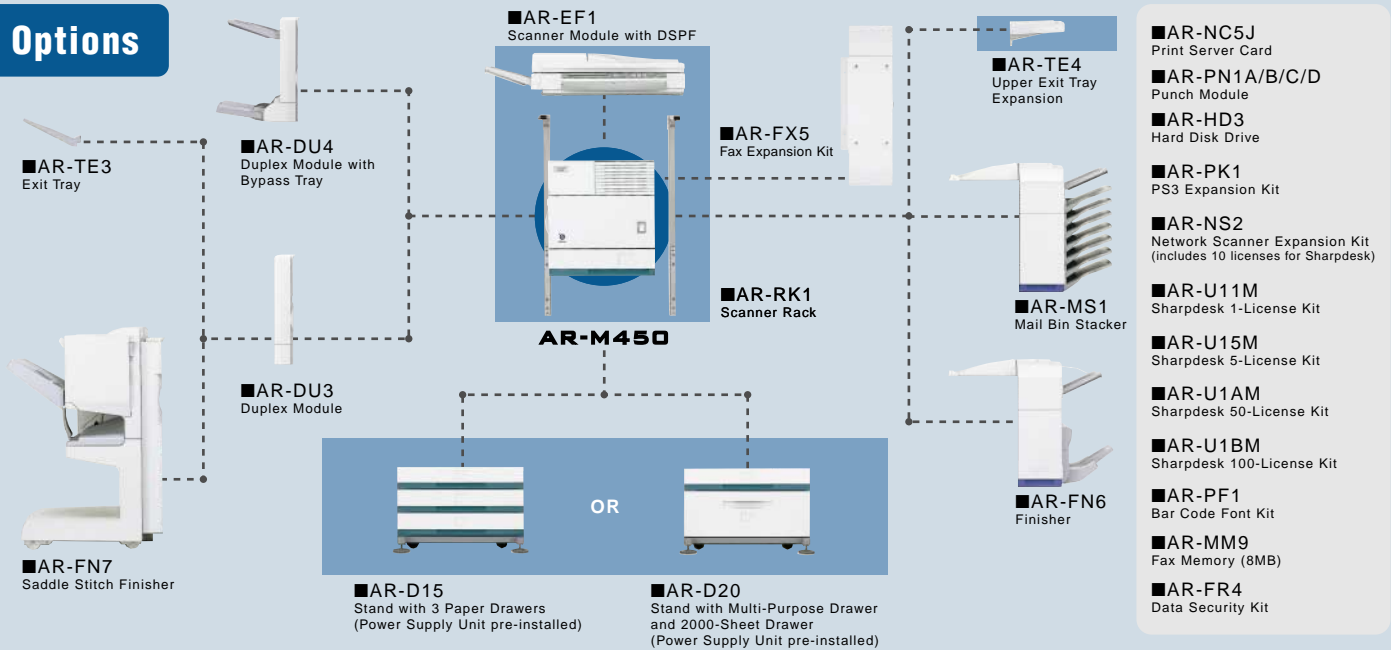
Broadcast Scan

With just a single operation, you can send the same document to multiple fax recipients. Recipients can be at either fax, internet fax or e-mail destinations.

OTHER FUNCTIONS

- One-Touch Dialling of 500 Numbers
- Multiple-Destination Selection (up to 300 Destinations)
- 400 x 400dpi Scanning Resolution in Ultra-Fine Mode
- Handles Originals up to 800mm Long**3
- Touch Panel Editing of Subject and File Name (for Internet Fax)**1
- Timer Transmission
- Fax Forwarding
- Dual Page Scan
- Fax Job Programmes (up to 8)
- Key Operator Programme
- Animated Guide for Easy Operation

Options



• AR-DU3 is required when installing AR-FN7. • AR-TE3 is required when installing AR-DU3 without AR-FN7. • AR-TE4 is required when neither AR-FN6 or AR-MS1 is installed.

Required for Basic Model

Specifications AR-M450 DIGITAL LASER PRINTER

AR-M450	
GENERAL	
Paper Size	A4, B5 (8 1/2" x 11") Up to A3 (11" x 17") with optional AR-D20 or AR-D15
Paper Capacity	500 sheets, expandable up to 3,100 sheets with options
Print/Copy Speed*1	Max. 45 ppm/cpm
Memory	64 MB, upgradable to 320 MB, 5 GB hard disk (option)
Warm-Up Time*2	Approx. 80 seconds
First Copy Time*2	4.6 seconds (1st paper tray, Quick Scan mode, 600 x 300 dpi)
Power Requirements	Rated local AC voltage ± 10%, 50/60 Hz
Power Consumption	Max. 1.44 kW (100 – 127 V), 1.85 kW (200 – 240 V)
Dimensions (W x D x H)*3	826 x 685 x 1,116 mm (32 17/32" x 26 31/32" x 43 15/16")
Weight*3	Approx. 99 kg (218 lbs.)
PRINTER	
Resolution	600 dpi, 1200 dpi equivalent with smoothing technology
Parallel Interface	IEEE 1284 parallel port
Supported OS (Printer Drivers)*4	Windows® 95/98/Me, Windows NT® 4.0, Windows® 2000, Windows® XP, Macintosh® OS 8.5.1 to 9.x
PDL Emulation	PCL®5e, PCL®6, PostScript®3 (option)*5
Resident Fonts	PCL: 45 outline fonts, PS: 136 outline fonts (option)
NETWORK PRINTER (Optional AR-NC5J required)	
Hardware Interface	100Base-TX, 10Base-T
Supported Platforms	UNIX, Windows® 95/98/Me, Windows NT® 4.0, Windows® 2000, Windows® XP, Novell NetWare 3.x/4.x (IntranetWare)/NetWare5, Macintosh® OS 8.5.1 to 9.x
Network Protocols	IPX/SPX for Novell environment, TCP/IP for Windows® and UNIX environment, EtherTalk for Macintosh® environment
Printing Protocols	Novell Printserver Application with NDS and Bindery, Printer resident LPD (includes reaction to LPQ request), TCP FTP for downloading print files, EtherTalk Printing, IPP, NetBEUI for Windows®
COPIER	
Originals	Max. A3 (11" x 17"), Min. A5 (5 1/2" x 8 1/2") (sheets, bound documents)
Continuous Copy	Max. 999 copies
Resolution	600 dpi (copying)/300, 600 dpi (scanning)
Zoom Range	25 to 400% with 8 preset ratios (4 reduction + 4 enlargement) 25 to 200% when equipped with DSPF
NETWORK SCANNER (Optional AR-NC5J and AR-NS2 required)	
Resolution	200, 300, 400, 600 dpi
Compatibility	TWAIN compliant (push out method)
Sharpdesk™ Licenses	10-user licenses included
FAX (Optional AR-FX5 required)	
Transmission Time	Less than 3 seconds*6
Compression Method	MH/MR/MMR/UBIG
Modem Speed	33,600 bps to 2,400 bps with automatic fallback
Communication Formula	Super G3, G3
Number of Supported Lines	1 for PSTN or PBX
Grayscale Levels	256 levels
Resolution Settings	Normal/Small Letter/Fine/Ultra-Fine
Memory	2 MB, upgradable to 10 MB (option)
One-Touch Dial Keys	500 (including e-mail addresses)

OPTIONS	
AR-DU3 Duplex Module	
Paper Size for Duplex Copy	Max. A3 (11" x 17"), Min. A5R (5 1/2" x 8 1/2"R)
Tray Capacity (Exit Tray*7)	100 sheets*8
AR-DU4 Duplex Module with Bypass Tray	
Duplex Module	Paper Size Tray Capacity (Exit Tray)
	Max. A3 (11" x 17"), Min. A5R (5 1/2" x 8 1/2"R) 100 sheets*8
Bypass Tray	Paper Size Paper Capacity
	Max. A3 (11" x 17"), Min. A5R (5 1/2" x 8 1/2"R) 100 sheets*8
AR-MS1 Mail Bin Stacker	
Number of Trays	8 (Top tray and 7 Mail bins)
Tray Capacity	Top tray: 250 sheets*8 Mail bins: 100 sheets each*8
Paper Size	Top tray: Max. A3 (11" x 17"), Min. A5R (5 1/2" x 8 1/2"R) and envelope*9 Mail bins: Max. A3 (11" x 17"), Min. B5R (Executive)
AR-FN6 Finisher	
Number of Trays	2 (Upper: Normal tray, Lower: Offset tray)
Tray Capacity	Normal tray: 500 sheets*8, Offset tray: 750 sheets*8
Paper Size	Normal tray: Max. A3 (11" x 17"), Min. A5R (5 1/2" x 8 1/2"R) Offset tray: Max. A4 (8 1/2" x 11"), Min. B5 (7 1/4" x 10 1/2")
Paper Size and Capacity for Stapling	A4, B5 (8 1/2" x 11"), up to 30 sheets (80 g/m ²)
Staple Pattern	3 patterns (front, rear or both)
AR-FN7 Saddle Stitch Finisher	
Number of Trays	2 (Upper: Offset tray, Lower: Saddle stitch tray)
Offset Tray Capacity	Max. 1,000 sheets [A4 (8 1/2" x 11") or smaller]
Saddle Stitch Tray Capacity	Max. 100 sheets
Paper Size	Max. A3 (11" x 17"), Min. A5R (5 1/2" x 8 1/2"R)
Paper Size for Stapling	A3 to B5, 8 1/2" x 13" (11" x 17" to 8 1/2" x 11")
Stapling Capacity	Max. 50 sheets [A4 (8 1/2" x 11") or smaller]*10
Staple Pattern	3 patterns (front, rear or both)
AR-PN1A/B/C/D Punch Module	
Model*11	AR-PN1A AR-PN1B*12 AR-PN1C AR-PN1D*13
Number of Holes	2 2 or 3 4 4
AR-D20 Stand with Multi-Purpose Drawer and 2000-Sheet Drawer	
Upper Drawer	Paper Size Tray Capacity
	A3 to A5R, 8 1/2" x 13" (11" x 17" to 5 1/2" x 8 1/2"R) and envelope*9 500 sheets*8, 40 envelopes*9
Lower Drawer	Paper Size Paper Capacity
	A4 (8 1/2" x 11") 2,000 sheets
AR-D15 Stand with 3 Paper Drawers	
Upper Drawer	Paper Size Tray Capacity
	A3 to A5R, 8 1/2" x 13" (11" x 17" to 5 1/2" x 8 1/2"R) and envelope*9 500 sheets*8, 40 envelopes*9
Middle/Lower Drawer	Paper Size Paper Capacity
	A3 to B5R, 8 1/2" x 13" (11" x 17" to 7 1/4" x 10 1/2"R) 500 sheets each

*1 A4 (8 1/2" x 11"), Portrait. *2 At rated voltage, 20°C (68°F), 65% RH. *3 Dimensions and weight include scanner rack and stand.
*4 For Macintosh® the optional AR-PK1 is required. *5 PostScript®3 is available for Windows® machines only. *6 Based on ITU-T test chart No.1 at standard resolution. Data transmission time only, not including protocol transmission time. *7 Optional AR-TE3.
*8 A4 (8 1/2" x 11"), 80 g/m² (20 lbs.). *9 COM-10, Monarch, DL, C5, ISO B5. *10 128 g/m² (34 lbs.) x 2 + 80 g/m² (20 lbs.) x 48.
*11 Multiple punch modules cannot be installed together. *12 Two or three holes can be punched depending on the paper size.
*13 Intervals between holes are not regular.
• Design and specifications are current as of September 2003, but are subject to change without prior notice.
• Some brand names and product names are trademarks and registered trademarks, thus are the property of their respective owners.
• Some options are not available in some regions.