

TOSHIBA
Leading Innovation >>>

e-STUDIO555
e-STUDIO655
e-STUDIO755
e-STUDIO855



Your Gateway to Peak
Productivity



Print



Copy



Scan



Fax



e-STUDIO



In the face of increasing business competition, the demand for better office productivity and seamless document workflow integration is becoming more apparent. Toshiba embraces these requirements with new series of high speed monochrome MFPs - e-STUDIO 555/655/755/855, developed based on Toshiba's 3rd generation e-BRIDGE technology. Integrating print, copy, scan, fax and management controls in a single device, the new series bring a new dimension to high volume document management solution.

Accelerated Performance With Operational Simplicity

Not only do the e-STUDIO 555/655/755/855 generate large-volume jobs at high speed, the new series also give you even more user-friendliness and efficiency.

High Speed Printing and Swift Scanning

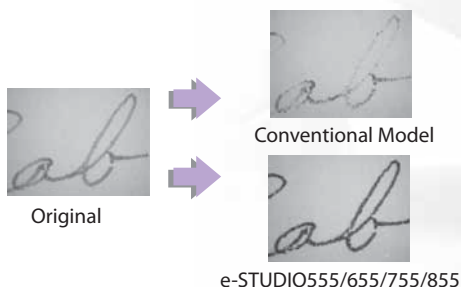
At a high speed print of 55/65/75/85ppm and scan speed at 80ppm, the e-STUDIO 555/655/755/855 complete your high volume job in a flash.

Toner-on-the-Fly

It can be disruptive to stop in the middle of an urgent print job to replenish toner. The Toner-on-the-Fly function maximizes MFP uptime and office productivity by allowing replenishment of toners even when the machine is still printing a job

Excellent Image Quality

Image quality is ensured by using high performance image processing technology and micro grain toner technology. The combination of these two technologies produce impressive clear reproduction of fine text and smooth gradation.



Discover how simple



- Highly productive dual-sided scanning that is nearly the same speed as single-sided job with the RADF

- Wide range of optional finishers to speed up workflow



- Advanced multi-stapling & saddle-stitching functions

Copy Settings Made Simple

With e-STUDIO 555/655/755/855 Template features, user no longer has to go through repeated and complicated copy settings. It can be set at once and saved as a short-cut button (Template) on the touch screen control panel. With Dual Agent setting, the Template can be further enhanced to perform two tasks at one time - such as copy and save as a file in the network or copy and store to e-filing box.

Customized User Menu


"My Menu" customizes the control panel to each individual user. Once authenticated with the MFP, the user can see their own customized templates screen. This further elevates work efficiency to a higher level of satisfaction.

productivity can be.

e-STUDIO 555/655/755/855




- Large, easy-to-see 8.5" colour LCD control panel makes operation more visible and simple



- A maximum of 7,600 sheet paper supply solidly backs up your high volume jobs.
- Wide variety of finishers that hold up to 4,000 sheets (2,000 x 2)

Time Saving and Document Mobility

With e-STUDIO 555/655/755/855, documents can be printed directly from the USB media by inserting it into the MFP. There is no need to switch on the computer or ensure if the correct driver is installed. When in a rush, scan jobs can be saved into the USB media directly, thus saving time and providing document mobility.



e-BRIDGE 3 Technology

Toshiba e-BRIDGE Technology is the core of the e-STUDIO series. The 3rd generation is even more advanced than before especially in providing user-accessibility. It is a gateway to software solutions that enhance productivity, security and document management. It greatly expands processing power and external networking capabilities for peak productivity. Also, attractive new functions are provided by the new user interface and advanced system software.



Integrated Document Hub

The e-STUDIO 555/655/755/855 boost office connectivity with easy network integration.

With an USB enabler plugged into the MFP, an array of print, scan and internet fax functions can be accessed instantly. Together with the new fax function, your MFP can be transformed into a connected document management centre. Take advantage of the features now.

Improves Print Performance

With Proof Print, user checks on a copy of the job before deciding if they want to continue printing the rest of the sets. This minimizes mistakes and reduces unnecessary printing.

Privacy is extremely important when printing confidential documents. With Private Print, user sets a password for the print job. The job can be released only if user enters the correct password onto the control panel.

When Hold Print is selected, jobs sent to the MFP will not be printed immediately. It is held in the MFP until user releases

it from the control panel. This prevents wrong collection of documents at the MFP. For jobs that are sent accidentally, it can also be deleted from the control panel to trim running cost.

When multiple jobs from different users are sent to the MFP, it might not be so straightforward to find one's print job from the control panel. By giving the job an Alias Name, user can identify their jobs much faster and easier. This saves time for more productive work.

Scanning Advantages

The Scan to File function allows pages to be scanned in either TIFF or PDF formats and be sent automatically to a network location for easier access.

With Scan to e-Filing, data will be stored in the HDD of the MFP for output on demand. The stored information can also be edited and merged easily with data from different sources by using the e-Filing web utility.

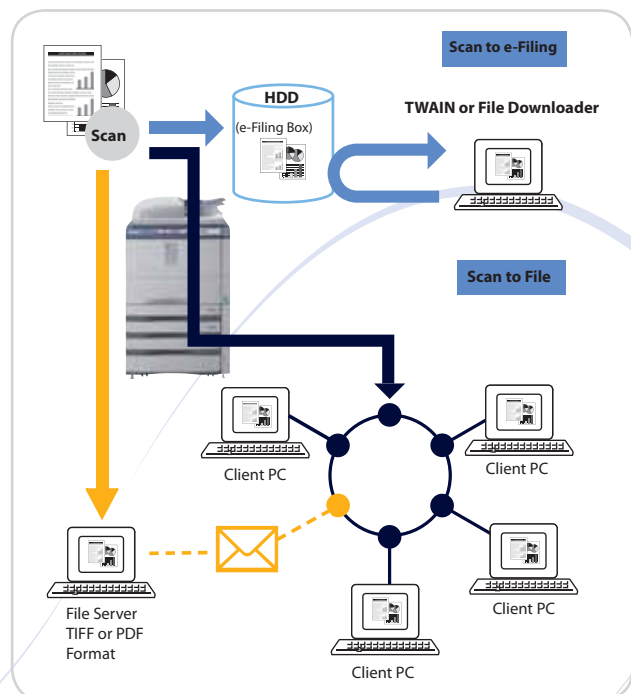
Scan to Email allows documents to be digitized into TIFF or PDF format, and be sent swiftly as an email directly from the MFP.

Smooth Faxing Capabilities

Super G3 Faxing - Documents are transmitted at 33.6kbps over standard telephone lines.

Incoming Fax Routing - Traditionally incoming faxes are all printed out. With e-STUDIO 555/655/755/855 incoming fax routing, faxes can be flexibly programmed and forwarded automatically to various destinations such as emails or network folders. Retrieving faxes is now more versatile and convenient.

PC Faxing - Faxes can be sent directly from PC without the need to print out prior to faxing. Apart from saving paper and printing cost, image quality can also be maintained.



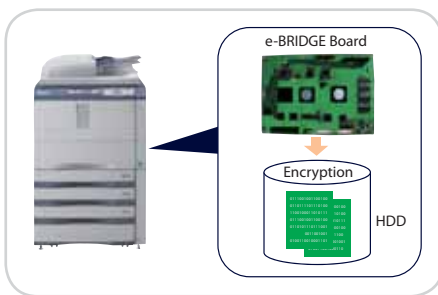
Solid Security and Control

Offering reinforced security and management measures to meet any complex business demand

With huge amount of data generated and stored within the MFPs, information security, access control and cost management are gaining importance. The e-STUDIO 555/655/755/855 offers an extensive range of enhanced security with more efficient control over your data and information.

Protect Data in HDD

As a standard feature, the e-STUDIO 555/655/755/855 offer Advance Encryption Standard (AES) encryption for data in the hard-disk. This powerful encryption standard guards against data interception and ensures a peace of mind for every organisation.



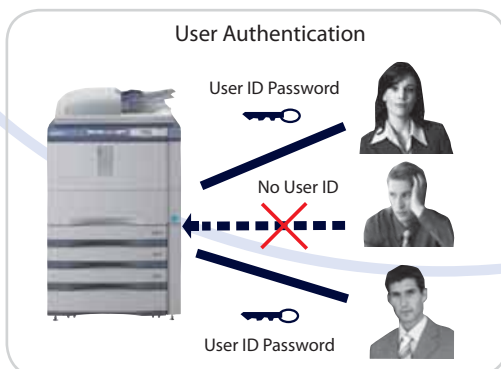
Highly Secure Networking

By using IP and MAC Address Filtering, the IP and MAC addresses that have access to the MFP are strictly controlled. In addition, with IEEE802.1X, LAN network communication can be securely authenticated. For the highly secured and advanced organizations, IPSec is also an option available to encrypt IP packet data, preventing interception and tampering during transmission.

Be In Control At All Times

Secure Access Control

With MFP as an information hub in the networked environment, data access and information sensitivity can be very critical. Providing User Authentication with up to 1,000 department codes and 10,000 user codes, the e-STUDIO 555/655/755/855 provides complete user access control for every unique organization. Only users who are successfully authenticated will be allowed to use the MFP.

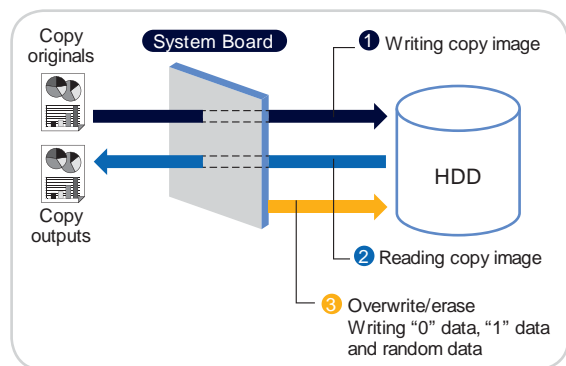


Enhanced Usage Control

The Role-Based Access Control (RBAC) function limits the user from accessing certain functions of the MFP, such as print, copy or network scan function and more, based on their

Prevent Data Leakage

For added security, the optional Data Overwrite Enabler securely erases latent data in the HDD upon job completion. Leaving no traces of the original data, it effectively prevents data leakage to unauthorized access.



department or position in the organization. Usage of the various MFP functions can now be better managed, cost kept in control and security enhanced.

For the dynamic organization, guest account with very limited access to MFP can be flexibly created without the need to enter a username or password for authentication. Ensuring control yet providing flexibility, this is especially useful for organization with frequent visitors.

Better Management of Printing Cost

The ability to set department or user print limit allows for strict cost control by limiting the amount of print possible for the different departments and users.

Easy Monitoring of Job Status

Manage and maintain MFP efficiently with the web-based TopAccess which provides real time status of machine, job queue, log information as well as allow for easy configuration of MFP settings. To further enhance MFP and job monitoring, email notification can be set for events such as job completion, fax forwarding and counter information.

With TopAccess Docmon utility, users can get instant pop up notification of device status or job status directly from their workstation.

Streamline Workflow with e-STUDIO Solutions

The e-STUDIO 555/655/755/855 boosts connectivity, integration and business expansion with a wide range of solutions that effectively responds to diverse user needs.



Apart from offering features out of the MFP, the e-STUDIO 555/655/755/855 is set to enhance workflow with solutions that set you apart from the rest.

Toshiba's e-BRIDGE Open Platform is a flexible, open software architecture that allows our value-added solution partners to create a truly customized MFP solutions. By expanding the integration capabilities of Toshiba MFPs, business process can be streamlined and workflow efficiency improved.

e-BRIDGE EFMS provides centralized monitoring and administration of office networked MFPs and printers. Device status, supply information, paper level and more, can be viewed instantly for immediate action. To enhance accountability, reports on counter usage can be generated as tables or charts, or be exported as CSV format for processing by external report generation software.

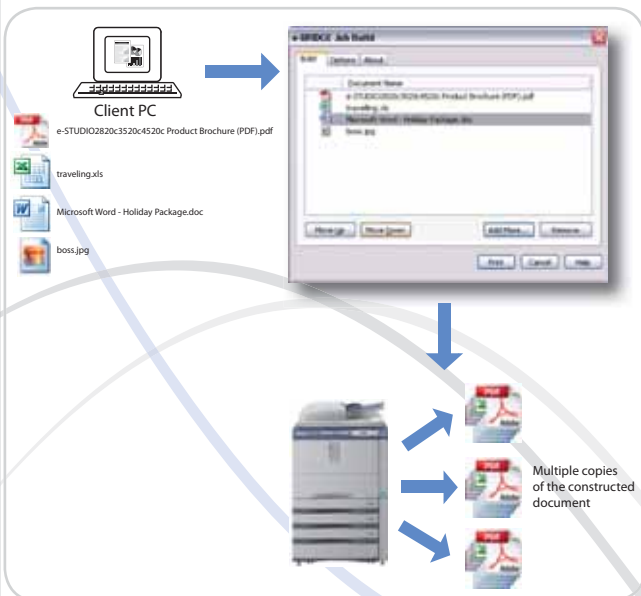
e-BRIDGE Job Build conveniently combines jobs from different sources and file types. Instead of printing separately and manually combining the documents, users can now print to Job Build, shift the sequence of the job in the list and output them together as a single print job. This saves much time and effort, especially when printing huge quantity.

e-BRIDGE Re-Rite is a server based Optical Character Recognition (OCR) application that automatically converts scanned paper documents into editable and searchable files. This saves time storing, finding, re-typing and re-formatting documents.

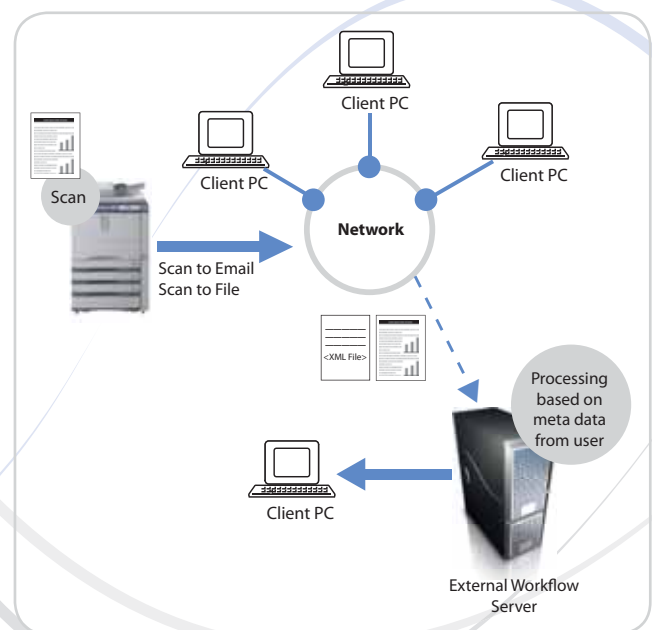
With ID Gate card reader, users can just tap their contactless iClass card to be authenticated with the MPF – swift and easy.

e-BRIDGE Drop Zone improves office productivity by allowing customization of print settings and finishing parameters into short-cut icons on the PC desktop. Saving time and effort, users can now simply “drag and drop” the file to the desired Drop Zone icon for printing.

Meta Scan allows attachment of additional information from the user as an XML file attached to the network scan jobs. These additional information can be flexibly and easily customized for user input on the control panel. The attached scanned data can then be accessed by external workflow system for further processing based on user's input. With Meta Scan, the scanning workflow can be streamlined and automated.



e-BRIDGE Job Separator makes it possible to print multiple sets of a job separated by a separator page for faster retrieval and distribution to various parties. Separator page title and the number of sets can also be printed on the separator page to minimize distribution errors.



System Configuration

e-STUDIO 555/755/766/855 has a wide variety of options that further enhance the machines' performance for even higher productivity.

Option	Function	Function		Scan File USB E-mail	Fax	Internet Fax	Network Fax	
		Copy	Print				PSTN	Internet
Printer kit		<input type="radio"/>	<input type="radio"/>					<input type="radio"/>
Scanner kit		<input type="radio"/>		<input type="radio"/>		<input type="radio"/>		
Printer/Scanner kit or Printer kit + Scanner kit		<input type="radio"/>	<input type="radio"/>	<input type="radio"/>		<input type="radio"/>		<input type="radio"/>
Fax Unit		<input type="radio"/>			<input type="radio"/>	<input type="radio"/>		
Printer kit + Fax Unit		<input type="radio"/>	<input type="radio"/>		<input type="radio"/>	<input type="radio"/>	<input type="radio"/>	<input type="radio"/>
Scanner kit + Fax Unit		<input type="radio"/>		<input type="radio"/>	<input type="radio"/>	<input type="radio"/>		<input type="radio"/>
Fax Unit + Printer/Scanner kit or Fax Unit + Printer kit + Scanner kit		<input type="radio"/>	<input type="radio"/>	<input type="radio"/>	<input type="radio"/>	<input type="radio"/>	<input type="radio"/>	<input type="radio"/>

Blending Eco-efficiency with Superb Technology

Toshiba's corporate-wide pursuit of higher eco-efficiency has guided the core development of the new e-STUDIO555/655/755/855. The superb technologies range from the reduction of power consumption to the elimination of environmentally harmful substances.

Saves On Power Consumption and Running Costs

The original Twin IH fusing technology accelerates warm-up time and lowers both power consumption and running costs. The new series also comply to the Energy Star Standard with the new Super Sleep Mode. With the new mode, power consumption is further reduced to a mere one watt with power ON when the machine is not in full operation.

Toner Recycling

With a specially designed toner recycling system, up to 90% of the waste toner can be recycled back to the system. Fresh toner is blended with recycled toner to be used again and image quality is still maintained as when using fresh toner.

Minimize Waste of Usable Resources

Toshiba actively pursue environmental sustainability and utilise recycled plastic materials in our products to minimize waste of usable resources.

Free from Harmful Substances

Toshiba always actively ensure our eco-friendly efforts extend to the elimination of harmful substances that include lead, Chromium IV, halogen and PVC. Our MFPs are designed to be compatible to ROHS (Restriction of Hazardous Substances) regulation.



Specifications

General	
Copying Process	Indirect electrostatic photographic method
Copying Technology	e-STUDIO555/655: 1 beam laser printing (Memory copy standard) e-STUDIO755/855: 2 beam laser printing (Memory copy standard)
Memory Size	RAM: 1GB, HDD: 60GB+ (Shared for all imaging functions)
Warm-Up Time	130 seconds, approx.
Power Consumption	2.0kW (115V, 220-240V) Max.
Dimensions	W 698 x D 789 x H 1,176 (mm)
Weight	202kg, approx.
Paper Supply Capacity	7,600 sheets (80 g/m ² , with optional external LCF) Max.
- Standard (3,600 sheets)	Drawer (500 sheets) x 2, Tandem LCF (2,500 sheets), Stack Feed Bypass (100 sheets)
- Optional	External LCF (4,000 sheets)
Paper Size	Drawer: A5-R to A3 Tandem LCF: A4 Stack Feed Bypass: A3/A5-R Optional External LCF: A4
Paper Weight	Drawer: 64 - 209 g/m ² Tandem LCF: 64 - 209 g/m ² Stack Feed Bypass: 64 - 209 g/m ² Optional External LCF: 64 - 209 g/m ²
Duplex	Standard
RADF	Standard
- Stack capacity	100 sheets (A5-R to A3) 80 g/m ²
- Original setting	Face up
- Original paper size	A5-R to A3
- Original paper weight	Simplex 35- 209 g/m ² , Duplex 50-157g/m ²

Print Specifications	
*Note: optional	
Speed (A4, Simplex)	e-STUDIO555: 55 ppm e-STUDIO655: 65 ppm e-STUDIO755: 75 ppm e-STUDIO855: 85 ppm
Resolution	600 x 600 dpi, 1 bit, 2,400 x 600 dpi (with smoothing)
Interface	Ethernet (10/100BASE-T), USB 2.0/Hi Speed, Wireless LAN (option), Bluetooth (option)
Printer Language	PCL6 emulation, PostScript3 emulation, XPS
Protocols	Windows Printing (SUB), LPR/LPD, IPP (V1.1 with Authentication/SSL), Netware P-server (NDS/Binary 1 Toshiba NDPS Gateway/LPD with iPrint), Apple Talk PAP/EtherTalk, Port 9100 (bi-directional), Bluetooth (HCRP/BIP/DPP/FTP) JPEG only, A5/400 (via Port9100/WCO), SAP R/3 (Device type of PCL/PS)
Drivers	Windows 2000, XP, Server 2003/2008, Vista, 7, UNIX, Linux (Solaris SUN, HP-UX, SCO), MPS, MacOS10.2.4, 10.3, 10.4, 10.5 and 10.6
USB Direct Print	PDF, JPEG, SlimPDF, XPS

Copy Specifications	
Speed (A4, Simplex)	e-STUDIO555: 55 cpm e-STUDIO655: 65 cpm e-STUDIO755: 75 cpm e-STUDIO855: 85 cpm
Original Scan Speed (A4, Simplex)	66 spm
Resolution	Scanning: 600 x 600 dpi Printing: 2,400 x 600 dpi (with smoothing)
First Copy Out Time	e-STUDIO555/655: 4.0 seconds, approx. e-STUDIO755/855: 3.5 seconds, approx.
Copy Mode	Text, Text/Photo, Photo, Custom
Reproduction Ratio	25% to 400% in 1 increment (Platen glass) 25% to 200% in 1 increment (RADF)
Original Size	A3, Max.
Multiple Copying	Up to 9,999 copies

Scan Specifications	
*Note: Optional	
Speed	80 spm (300 dpi), 66 spm (600 dpi)
Resolution	150 dpi, 200 dpi, 300 dpi, 400 dpi, 600 dpi
File Format	TIFF, PDF, XPS, JPEG (Grayscale only)
Direct Scan	Scan-to-File, Scan-to-Email, Scan-to-e-Filing, Scan-to-USB
Max. Pages	2000 (A4)/HDD limit

Distributed by

Fax Specifications	
*Note: Optional	
Compatibility	Super G3, G3
Modem Speed	Max. 33.6kbps
Scan Speed (A4)	0.7 seconds per page (A4) / 50 scan per minute
Transmission Speed	Approx. 3 seconds per page
Data Compression Method	JBIG, MMR, MR, MH
Memory Transmission	Max. 100 jobs 1,000 destinations, 400 destinations/job, Max. 1000 pages/file
Memory Capacity	Transmission 500MB (HDD) Reception 200MB (HDD) Back up Permanent (HDD)
Other Fax Functions	Network Fax, Internet Fax

e-Filing Specifications	
Operation Method	Colour touch control panel or client PC
Number of Boxes	1 public box, 200 private user boxes
Capacity of Boxes	100 folders per box, 400 documents per folder, 1,000 pages per document

Options	
Finishing	
Finisher (MJ-1027)	
- Tray Capacity	2 trays: 2,000 sheets (A4, B5), 1,000 sheets (A4-R, B4, A3, B5-R, FOLIO), 500 sheets (A5-R)
- Staple Capacity	50 sheets (A4,B5), 30 sheets (A3, B4, A4-R, FOLIO)
Saddle-stitch (MJ-1028)	
- Tray Capacity	2 trays: 2,000 sheets (A4, B5), 1,000 sheets (A4-R, B4, A3, B5-R, FOLIO), 500 sheets (A5-R)
- Staple Capacity	50 sheets (A4,B5), 30 sheets (A3, B4, A4-R, FOLIO)
- Saddle stitch	
-Paper size	A3, B4, A4-R (60-105g/m ²)
-Staple capacity	15 sheets, Max.
-Stack capacity	11 - 15 sheets copy : 10 sets 6 - 10 sheets copy : 20 sets Less than 6 sheets : 25 sets
Hole Punch Unit (MJ-6003) for MJ-1027, MJ-1028	
Insertion Unit (MJ-7001)	100 sheets / B5, B4, A4-R, A4, A3 / 60 - 256 g/m ²
Staple Cartridge	STAPLE-600 (for MJ-1028), STAPLE-700 (for MJ-1027 & MJ-1028)
Finisher Guide Rail (KN-1017)	
Drawers	
Large Capacity Feeder (MP-4004A4)	4,000 sheets / A4 / 64 - 209 g/m ²
Network Utilities	
Printer kit (GM-1180)	
Scanner kit (GM-4180)	
Printer/Scanner kit (GM-2180)	
Information Communications / Security	
Fax Unit (GD-1250AS/NA)	
Fax Kit 2nd Line (GD-1260AU/NA)	
Wireless (GN-1050)	
Bluetooth (GN-2010)	
Antenna (GN-3010) for GN-1050 and GN-2010	
Meta Scan Enabler (GS-1010)	
Harness Cable for External Device (GQ-1240)	
e-BRIDGE ID Gate (KP-2004 HID), (KP-2005 Mifare)	
Data Overwrite Enabler (GP-1070)	
IPsec Enabler (GP-1080)	
External Interface Enabler (GS-1020)	
*LCF: Large Capacity Feeder	

Note: Toshiba does not guarantee the compatibility of all brands/models of USB Media with e-STUDIO 555/655/755/855

Microsoft and Windows[®] are registered trademarks of Microsoft Corporation in the United States and/or other countries.
Adobe[®] PostScript[™] Level 3[™] is a registered trademark of Adobe Systems, Inc.
Mac OS[®] is a registered trademark of Apple Inc.
All other brand and/or product names are trademarks of their respective owners.

All specifications relevant to paper capacity, productivity and others relating to paper refer to A4 size paper of 80g/m² (LT size paper of 20 lbs) quality if not otherwise mentioned.
This brochure was compiled based on information that was accurate prior to product launch. Product design and specifications are subject to change without notice. The colour(s) of the actual product may vary from the colour(s) shown in this brochure. No part of this material may be used or reproduced in any manner whatsoever without permission. 1GB is equivalent to 1 billion bytes. Days for function availability may differ by region. "e-filing" is an abbreviation of "electronic filing". Warm-up time and print speed may vary depending on the operating environment. ©2009 TOSHIBA TEC CORPORATION All rights reserved.

As an ENERGY STAR Partner TOSHIBA TEC CORPORATION has determined that this multifunctional device model meets the ENERGY STAR guidelines for energy efficiency.



TOSHIBA

TOSHIBA SINGAPORE PTE LTD

438B Alexandra Road, #06-01, Alexandra Technopark

Singapore 119968

Tel: (65) 6516 0380

Fax: (65) 6516 0430

<http://www.estudio.com.sg>