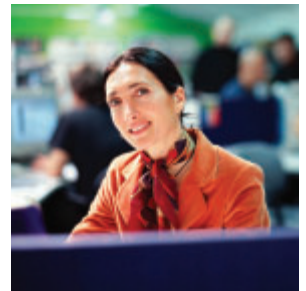


HP Designjet 500 and 800 Series Printers

500 • 800 • 800ps



High-quality, large-format color printing for technical and business customers who need illustrations, schematics, drawings, plans, or presentations.



High-quality lines and images

- **Best combination of line quality and image printing.** Four-color, high-resolution writing system with pigmented black delivers excellent line quality plus high quality imaging.
- **HP color layering technology.** The writing system combines multiple ink drops on a single dot to create smooth color transitions, so you get top quality results for images, renderings, and illustrations.
- **Media choices for every task.** Broad portfolio of basic and premium printing materials support a wide array of technical and graphics applications.

Fast, reliable performance

- **Quick turnaround for tight deadlines.** Line drawings print in as little as 60 seconds so you can view your work and present or make changes in real time.
- **Easy system integration.** Windows, Macintosh, and AutoCAD drivers ensure you have the compatibility you need; standard interfaces and network capability (optional on HP Designjet 500 models) make adding these printers to your system fast and simple.
- **HP quality and reliability.** These printers deliver solid performance, day in and day out; and they're backed by support and service from the worldwide leader in large-format printing.

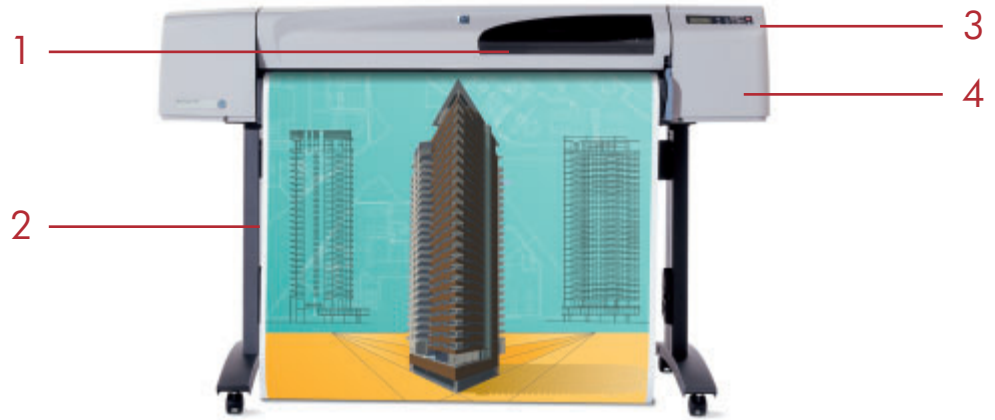
Choices for all environments

- **Solo or shared.** HP Designjet 500 personal printers offer solid performance for single users or small groups—all files process in your computer prior to transmission. HP Designjet 800 series workgroup printers are designed to be shared with a virtual computer inside for on-board processing, built-in networking, a hard drive, and support for file queuing and nesting.
- **Multiple sizes and configurations.** All 500 and 800 series printers come in both 24" and 42" widths; the 24" models can be used for tabletop output or with optional stand and bin.
- **RIPs for managing color.** Choose the HP Designjet 800ps models with an embedded RIP or add the optional software RIP to an HP Designjet 500. Either way, you'll get color management tools that help you get the color you need: offset press emulation, ICC profiles for Windows and Macintosh, and Apple® ColorSync™ compatibility.



HP Designjet 500 and 800 Series Printers

1. Separate ink cartridges for lower cost per copy and limited user interaction
2. Media stand and bin collect and stack drawings as they print (opt on 24" models)
3. Easy-to-follow control panel for simplified user interaction
4. Smart supplies monitor ink usage and printhead status
5. USB and parallel connections, plus network capability (standard on 800 series) ensure easy system integration
6. Roll feed with automatic cutter loads and feeds easily



HP Designjet 500 front shown



HP Designjet 800 front shown

Series at a glance

HP Designjet 500

- Choice of 24" and 42" models
- Host-based processing
- Windows and Macintosh drivers
- 16 MB RAM
- PCL3-GUI only
- Optional HP-GL/2 accessory card
- Optional HP JetDirect internal EIO print server

HP Designjet 800

- Choice of 24" and 42" models
- On-board processing
- Windows and Macintosh drivers
- 6 GB hard disk and 96 MB RAM
- HP-GL/2, HP RTL, and CALS G4
- HP Jetdirect internal EIO print server

HP Designjet 800ps

- Choice of 24" and 42" models
- On-board processing
- Windows and Macintosh drivers
- 6 GB hard disk and 160 MB RAM
- HP-GL/2, HP RTL, and CALS G4
- Adobe® PostScript® 3™ RIP
- HP Jetdirect internal EIO print server



Not just a printer. A complete printing system.

Supplies that deliver on quality and value

HP printing supplies maximize the performance of your HP Designjet 500 or 800 series printer by delivering uncompromising print quality, performance, and reliability. The pigmented black ink delivers crisp, dark lines, suitable for reproduction or long-term storage. Individual ink supplies ensure you only replace what you need, when you need it. Smart chips monitor the ink levels and printhead status, so you'll know when your printer needs attention. Media from HP completes the supplies family. HP Premium Printing Material is engineered and tested to ensure the best possible output with HP Designjet printers and ink supplies; HP premium products provide uncompromising image quality, consistency, and performance. HP Universal Printing Material delivers quality results at a low price – they are HP-tested to meet the everyday needs of graphics and technical professionals.

Connectivity that delivers compatibility

Robust Windows and Macintosh drivers—HP develops drivers to help you get the most out of your printing. Whether you need to print house plans from AutoCAD, posters from CorelDraw, or spreadsheets from Excel, HP drivers will provide the quality you need from the applications you use most.

True Adobe PostScript 3—HP offers two solutions for customers who need PostScript output for compatibility, color management, or workflow integration. The EFI Designer Edition software RIP allows HP Designjet 500 customers to process PostScript and EPS files easily on their system. Workgroups that need a network friendly, shared PostScript printer can select one of the HP Designjet 800ps models with a built-in RIP. Both RIPs are true Adobe PostScript 3 solutions and offer a variety of color management options, such as offset emulation, ICC profile support, and Apple ColorSync compatibility.

Services that make a difference

HP offers a variety of services for HP Designjet customers designed to help you manage your printing investment and get more from your HP solution. Online troubleshooting and toll-free phone support mean your questions are answered quickly and efficiently. Warranty extensions and upgrades are available, as well as standard and network installation. And HP Financial Services offers a complete array of attractive leasing and financial lifecycle management services. As the worldwide leader in large format printing, HP delivers more.

HP Designjet 500 and 800 Series Printers

Technical specifications

	HP Designjet 500 (24 in) (Product #: C7769B)	HP Designjet 500 (42 in) (Product #: C7770B)	HP Designjet 800 (24 in) (Product #: C7779B)	HP Designjet 800 (42 in) (Product #: C7780B)	HP Designjet 800ps (24 in) (Product #: C7779C)	HP Designjet 800ps (42 in) (Product #: C7780C)
Print speed	Line Drawings: 90 seconds (fast mode); Color Images: 85 ft ² /hr (fast mode), 36 ft ² /hr (normal), 21 ft ² /hr (best)			Line Drawings: 60 seconds (fast mode); Color Images: 85 ft ² /hr (fast mode), 36 ft ² /hr (normal), 21 ft ² /hr (best)		
Resolution, maximum	1200 x 600 dpi			2400 x 1200 dpi		
Print margins	Lateral: 5 mm; Leading and trailing edge: 17 mm					
Memory (standard/maximum)	16 MB/160 MB (w/ HP-GL/2 accessory card)		96 MB, 6 GB HD/ 160 MB, 6 GB HD		160 MB, 6 GB HD/ 160 MB, 6 GB HD	
Media	Sheet feed, roll feed, automatic cutter					
Types	Paper (plain, coated, natural tracing, photo, glossy, brochure, heavyweight), transparencies, vellum, translucent bond					
Media size, sheet (width/length)	8.3 in to 24 in/up to 74.7 in	8.3 in to 42 in/up to 74.7 in	8.3 in to 24 in/8.3 in to 74.7 in	8.3 in to 42 in/8.3 in to 74.7 in	8.3 in to 24 in/8.3 in to 74.7 in	8.3 in to 42 in/8.3 in to 74.7 in
Media size, roll (width/length)	24 in/up to 150 ft	24, 36, 42 in/up to 150 ft	24 in/up to 150 ft	24, 36, 42 in/up to 150 ft	24 in/up to 150 ft	24, 36, 42 in/up to 150 ft
Printing	Black, cyan, magenta, yellow					
Ink types	Pigment-based (black), dye-based (cyan, magenta, yellow)					
Connectivity	Centronics Parallel (IEEE 1284-compliant - ECP), USB 2.0 compliant		Centronics parallel (IEEE 1284-compliant - ECP), USB 2.0 compliant, HP Fast Ethernet Jetdirect card (10/100 Base-TX)		Centronics parallel (IEEE 1284-compliant - ECP), USB 2.0 compliant, HP Fast Ethernet Jetdirect card (10/100 Base-TX)	
Interfaces (standard)	HP-PCL3-GUI (Optional: HP-GL/2, HP RTL)		HP-GL/2, HP RTL, CALS G4		Adobe PostScript 3, HP-GL/2, HP RTL, CALS G4	
Languages	Microsoft Windows 95, 98, Me, NT 4.0, 2000, XP, 2003 Server; ADI driver for AutoCAD 13 and 14; Optimized Windows driver for AutoCAD 2000 - 2005; Raster driver for Mac (OS 9.x, OS X)		Microsoft Windows 95, 98, Me, NT 4.0, 2000, XP, 2003 Server; ADI driver for AutoCAD 13 and 14; Optimized Windows driver for AutoCAD 2000 - 2005; Raster driver for Mac OS (9.x, OS X)		HP-GL/2 drivers for Microsoft Windows 95, 98, Me, NT 4.0, 2000, XP, 2003 Server; Postscript drivers for Microsoft Windows 95, 98, Me, NT 4.0, 2000, XP, 2003 Server; ADI driver for AutoCAD 13 and 14; Optimized Windows driver for AutoCAD 2000 - 2005; Postscript driver for Mac OS (9.x, OS X)	
Drivers	Microsoft Windows 95, 98, Me, NT 4.0, 2000, XP, 2003 Server; Mac OS (9.x, X.1.5, X.2, X.3)		Microsoft Windows 95, 98, Me, NT 4.0, 2000, XP, 2003 Server; Mac OS (9.x, X.1, X.2, X.3)		Microsoft Windows 95, 98, Me, NT 4.0, 2000, XP, 2003 Server; Mac OS (9.x, X.1.5, X.2, X.3)	
Standard operating systems	Microsoft Windows 95, 98, Me, NT 4.0, 2000, XP, 2003 Server; Mac OS (9.x, X.1.5, X.2, X.3)		Microsoft Windows 95, 98, Me, NT 4.0, 2000, XP, 2003 Server; Mac OS (9.x, X.1, X.2, X.3)		Microsoft Windows 95, 98, Me, NT 4.0, 2000, XP, 2003 Server; Mac OS (9.x, X.1.5, X.2, X.3)	
System requirements	Windows minimum system configuration: Microsoft Windows 95, 98, Me: Pentium I, 133 MHz, 48 MB RAM, 300 MB available hard disk space; Windows NT 4.0: Pentium II, 300 MHz, 64 MB RAM, 400 MB available hard disk space; Windows 2000, 2003 Server: Pentium II, 300 MHz, 128 MB RAM, 400 MB available hard disk space; Windows XP: Pentium III, 733 MHz, 128 MB RAM, 400 MB available hard disk space					
Windows recommended system configuration	Microsoft Windows 95, 98, Me: Pentium I, 133 MHz, 64 MB RAM, 320 MB available hard disk space; Windows NT 4.0: Pentium II, 733 MHz, 128 MB RAM, 2 GB available hard disk space; Windows 2000, 2003 Server: Pentium III, 733 MHz, 256 MB RAM, 2 GB available hard disk space; Windows XP: Pentium IV, 1 GHz, 256 MB RAM, 2 GB available hard disk space					
Mac minimum system configuration	iMac G3, G4, G5 dual processor, iBook, PowerBook, eMac; Mac OS 9.1, OS X v 10.1.5; 128 MB RAM, 256 MB available hard disk space					
Mac recommended system configuration	1 GHz PowerPC G4; Mac OS 9 v 9.2, Mac OS X v 10.1.5, 10.2.2 and higher 10.3; 256 MB, 512 MB available hard disk space					
Dimensions	Printer: 49 in x 19 in x 14 in Shipping: 61 in x 25 in x 28 in		Printer: 67 in x 27 in x 43 in Shipping: 78 in x 26 in x 38 in		Printer: 49 in x 19 in x 14 in Shipping: 61 in x 25 in x 28 in	
Weight	Printer: 85 lb Shipping: 187 lb		Printer: 99 lb Shipping: 257 lb		Printer: 85 lb Shipping: 187 lb	
What's in the box	HP Designjet 500, printer stand and media bin (42 in model only) roll-feed spindle, power cords, ink system, HP printing material sample, user documentation, user maintenance kit, software setup CD and drivers for Windows, raster drivers for Mac		HP Designjet 800, printer stand and media bin (42 in model only) roll-feed spindle, power cords, ink system, HP printing material sample, user documentation, HP software setup CD and drivers for Windows, raster drivers for Mac, HP Jetdirect Fast Ethernet print server		HP Designjet 800ps, printer stand and media bin (42 in model only), roll-feed spindle, power cords, system, HP printing material sample, user documentation, software setup CD and drivers for Windows (HP-GL/2 and PostScript), PostScript drivers for Mac, Windows, HP Jetdirect Fast Ethernet print server	

Environmental ranges

Operating temperature:	59 to 95° F (15 to 35° C)
Storage temperature:	-40 to 158° F (-40 to 70° C)
Operating humidity:	20 to 80% RH

Acoustics

Sound pressure:	52 dB(A)
Sound power:	65 dB(A)

Power requirements

Input voltage:	100 to 240 VAC (± 10%) auto-ranging, 50/60 Hz, 3 amps maximum
----------------	---

Power consumption

Maximum:	150 watts
----------	-----------

Power certification

Safety certifications:	Compliant with the requirements for the ITE products—EU: Low Voltage Directive; USA and Canada: CSA Certified for US and Canada; Mexico: NOM-1-NYCE; Argentina: IRAM; China: CCIB and CCEE; Singapore: PSB; Russia: GOST; Poland: PCBC
------------------------	--

Electromagnetic compatibility:	Compliant with the requirements for Class B ITE products (Class A when connected to LAN cables)—EU EMC Directive, USA FCC rules, Canada DOC, Australia ACA, New Zealand MoC, China CCIB, Japan VCCI. Class A for Korea MIC, Taiwan BSMI
--------------------------------	---

ENERGY STAR® compliant

Warranty

One-year warranty

Ordering information

Product number	HP product
C7769B	HP Designjet 500 (24 in)
C7770B	HP Designjet 500 (42 in)
C7779B	HP Designjet 800 (24 in)
C7780B	HP Designjet 800 (42 in)
C7779C	HP Designjet 800ps (24 in)
C7780C	HP Designjet 800ps (42 in)
Options and accessories	
C2387A	64 MB memory module (requires C7772A)
C2388A	128 MB memory module (requires C7772A)
C2389A	24-in spindle
C2390A	42-in spindle
C7781A	24-in Printer stand and media bin
C7772A	HP-GL/2 accessory card and 16 MB memory module (500 model)
C2392A	USB 5-m cable
Q6643C	EFI Software Edition 4.2 for HP XL (500 model)
Service and support	
H5652E	3 year Next Day Onsite: HP Designjet 500 Series
H5729E	3 year Next Day Onsite: HP Designjet 800 Series
H7604E	Physical Installation
H4518E	Network Installation
Supplies	
C4844A	HP 10 Black Ink Cartridge (69 ml)
C4911A	HP 82 Cyan Ink Cartridge (69 ml)
C4912A	HP 82 Magenta Ink Cartridge (69 ml)
C4913A	HP 82 Yellow Ink Cartridge (69 ml)
C4810A	HP 10 Black Printhead
C4811A	HP 11 Cyan Printhead
C4812A	HP 11 Magenta Printhead
C4813A	HP 11 Yellow Printhead
Networking	
J7934G	HP Jetdirect (EIO) internal, 620n, Fast Ethernet Print Server, 10/100Base-TX, 802.3
J6058A	HP Jetdirect wireless, 680n, 802.11b

HP recommends genuine Microsoft® Windows® XP Professional for mobile computing.

ENERGY STAR and the ENERGY STAR logo are U.S. registered marks of the United States Environmental Protection Agency. Microsoft, Windows and Windows NT are U.S. registered trademarks of Microsoft Corporation. UNIX is a registered trademark of The Open Group. Linux is a registered trademark of Linus Torvalds.

© 2006 Hewlett-Packard Development Company, L.P. The information contained herein is subject to change without notice. The only warranties for HP products and services are set forth in the express warranty statements accompanying such products and services. Nothing herein should be construed as constituting an additional warranty. HP shall not be liable for technical or editorial errors or omissions contained herein.

For more information visit our website at www.hp.com

4AA0-0150ENUC, May 2006

